

No. 0363

County Washburn

Name Stanh, Charles

Acres 200

Grant No. _____

Issued _____

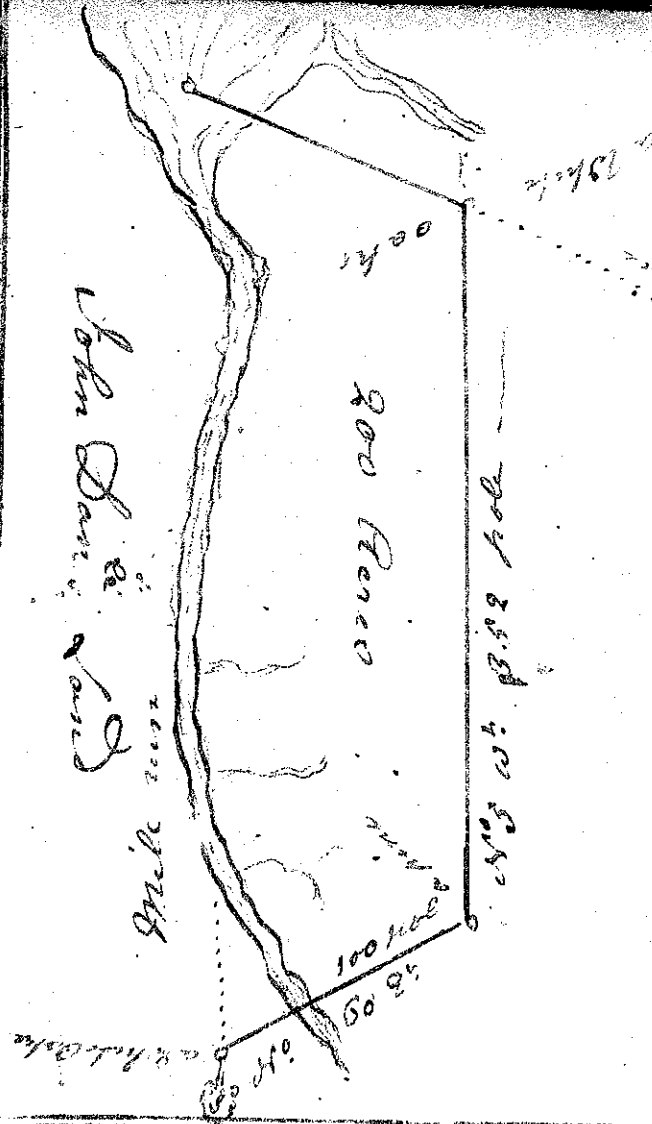
Warrant No. 122 Entry No. _____

Entered 12th Sept. 1763

Book No. _____ Page No. _____

Location In Mill pond
branch

Remarks: _____

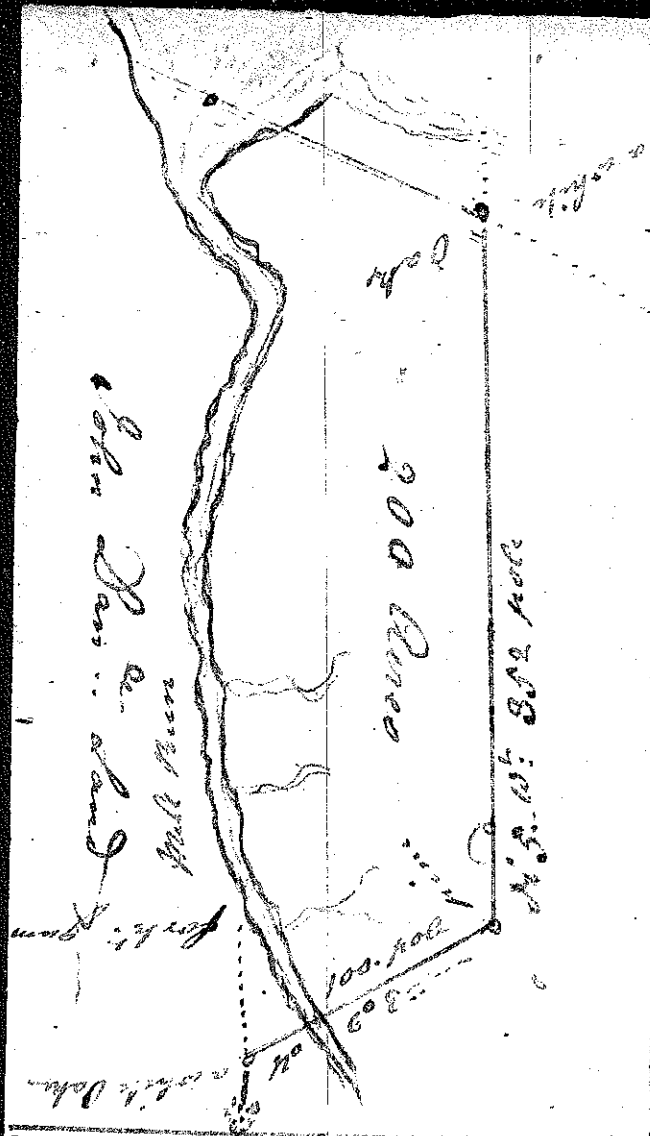


North Carolina
 Onslow County
 Sep: 12 1763

This plan represents
 200 acres of land located
 on Mill Run a branch of
 the N.W. of New River Beg
 at a White Oak James
 Gargemus; corner Henry
 thence N^o 60 E: 100 poles to a
 pine thence N^o 5 W: 35 poles
 to a White Oak in the old
 patent line thence
 N^o 45 W: 109 poles to a
 thence up the various corners
 of mill Run to the head
 line of the river
 James Gargemus; by

Thom Hill Decker

(See chain beaver Jun



North Carolina
 Caslow County
 Sept. 12th 1763

This plan represents
 200 Acres of Land Surveyed
 for Charles Stout Senior
 mile Run a Branch of
 Sh^r of River River —
 Beginning at a W^t Oak
 James Gargins corner of
 Run thence N 60^o E 100
 pole to a pine thence N 5^o W
 352 pole to a W^t Oak in
 old patent line thence
 N 5^o W 109 pole to a
 thence up the various
 of mile Run to a head
 Run

Survey by Thomas H. 1763

Jacob Stout & Co. Chain Beavers
John Durak

John Durak - 1841