

rs to

FACULTY AND OFFICERS

S. J. HONEYCUTT, A. B. PRINCIPAL,
(WAKE FOREST COLLEGE)
MATHEMATICS, LATIN, GREEK

MRS. S. J. HONEYCUTT, LADY PRINCIPAL,
(KEE MAR COLLEGE)
ELOCUTION AND READING

W. R. TIMMONS, A. B. SECRETARY OF FACULTY,
(FURMAN UNIVERSITY)
ENGLISH, HISTORY, FRENCH OR GERMAN

MRS. LILLIAN HOFFMAN TILLEY,
(MERRIDITH COLLEGE)
PRIMARY, INTERMEDIATE, GEOGRAPHY, SPELLING

(TO BE ELECTED)
MUSIC

REV. I. T. NEWTON, A. B.
(WAKE FOREST COLLEGE)
BIBLE DEPARTMENT

South Fork Institute

South Fork Institute is owned and controlled by the South Fork and Catawba River Associations through a Board of Trustees. Her purpose is to equip young men and women mentally and morally for the common vocations of life, and to lay solid foundations for a more extended and liberal education. The courses of study are preparatory, special care being given to fit pupils to enter any first class college.

Location

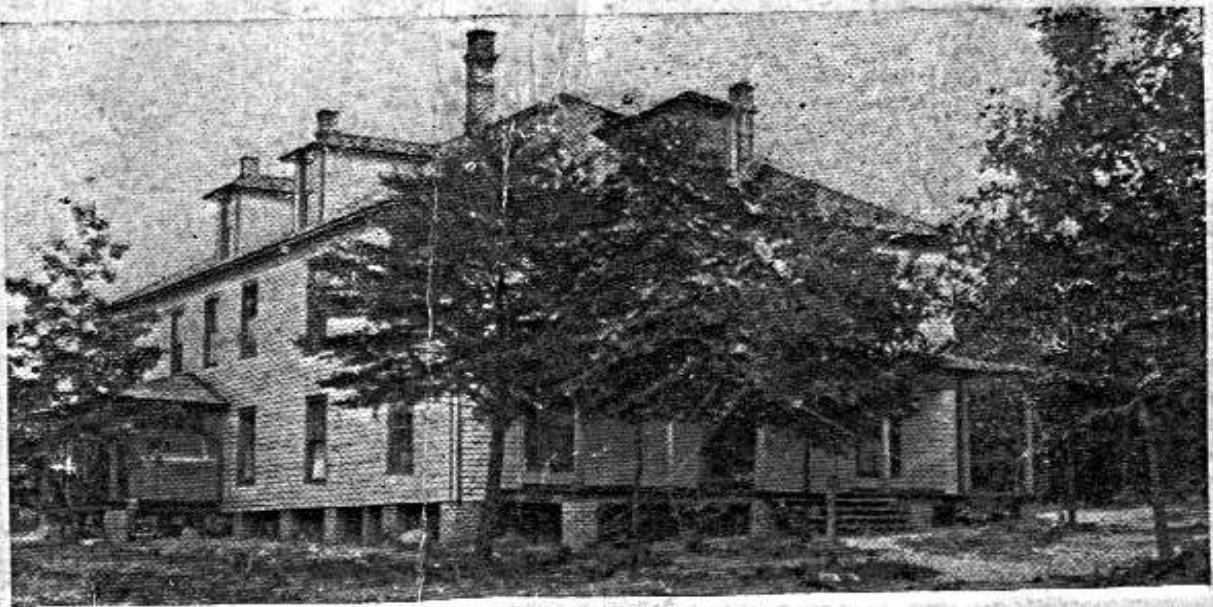
South Fork Institute is located at Maiden, N. C., which is between Lincolnton and Newton on the C. & N. W. R. R. Those living on the S. A. L. R. R. can change cars at Lincolnton, nine miles away, for Maiden. Those living on the Southern Railway can change cars at Gastonia if they live South of us, or at Newton, six miles distant, if they live North of us. Let us know when you are coming, and you will be met at the station.

Health

A more beautiful or healthful location for a school could not be found. Perfect natural drainage, pure air, mountain breezes, pure, delightful water with mineral properties, and careful attention to sanitary conditions combine to render the healthfulness of our school unsur-



GIRLS' DORMITORY



BOYS' DORMITORY

passed by any other, no matter where it is or what are its conditions. As illustrations, we take pleasure in stating that a family suffering from the effects of malaria came to us and were soon entirely restored to health. A child that had suffered all his life from croup and bronchial troubles has felt no symptoms of either since coming here. A young lady suffering from chronic throat affection and a distressing cough was entirely free from both in a short time after coming here. In all these cases no medicine whatever was used.

Lovers of beauty find a continual treat in the neighboring scenery and the grand mountain view.

A beautiful pond a mile away affords a pleasant walk, delightful boating and swimming. A ball-ground and two tennis courts provide healthful exercise and recreation.

The elevation is somewhat over 900 feet.

Buildings

The buildings are situated three quarters of a mile from the station, near enough to enjoy the advantages of daily mails and telegraph service, but distant enough to insure the perfect quiet necessary for hard study. The Main Building contains recitation and practice rooms, auditorium. At a little distance in front of the Main Building is the Girls' Dormitory. It is the residence of the Principals, who spare no energy in making an ideal home for the girls. On an adjoining knoll, some distance away, is the Boys' Dormitory, where Prof. Timmons looks after the welfare of the young gentlemen. The dining hall and kitchen stands near the Girls' Dormitory.

Religious Advantages

Our town contains four churches, which maintain

Sunday Schools throughout the year. Preaching may be enjoyed in one or more of them every Sunday.

On Wednesday evening our pupils meet in the parlors or the chapel and hold a most helpful prayer meeting. The chief object in this mid-week service is, of course, the worship due to our Heavenly Father. We find also that it gives us renewed strength and courage for the remainder of the week. A very important result is that by conducting and taking part in these meetings our pupils gain training and experience that prepare them to be of great service in their home churches.

Every morning at the beginning of our school duties, we try, by singing sacred songs, by reading the Bible, and by earnest, helpful talks, to lift our pupils' hearts to God, and to induce them to seek from the Holy Spirit strength and guidance for each day's duties and temptations.

At breakfast the boarding pupils voluntarily recite passages from the Bible.

Discipline

The government of this school is mild and parental. If pupils are willing to submit themselves to this kind of government, we greatly enjoy having them with us. The rules that we find necessary to insure the well-being of both the pupils and the school are such that their wisdom will be recognized and they will be obeyed by any pupil of reasonable mind and refined character. Any pupil will be expelled if he refuses to obey these rules, or if we find that his influence over other pupils is bad.

Important Information

Our pupils furnish nothing but bed-covering (half enough for one bed), pillow, towels, brushes, combs and toilet soap. We do NOT put our pupils to the unnecessary trouble of packing mirror, lamp, and kerosene can into their

trunks. Friends of the school have provided our bed rooms with elegant and comfortable furniture consisting of a dresser with a large mirror, chairs, a convenient wash stand, with bowl and pitcher, slop jar, etc., a large substantial study table, with lamp, and enameled ironbedstead, with springs and a good mattress. Each room has stove or fireplace, and is furnished with wood. Many of the rooms have a large closet; but where they have not, the bureau and wash stand drawers afford ample accommodation.

Some schools cheapen board by having the pupils study together in a hall after school hours and at night, thus avoiding the cost of keeping the fires in the bed rooms; but our pupils have all the fuel they wish in their own rooms. We believe the slight additional cost of board is abundantly repaid in the better studying our pupils do in the quiet of their own rooms. The additional comfort, too, is well worth the increased cost of board.

Our dining hall was also furnished by friends of the school. The table linen, silverware, etc., are all that the most refined taste can desire. As to food, the supply is abundant, wholesome, and well prepared, with as great variety as seasons and conditions allow. Several of our teachers, and many visitors, who have had wide experience with boarding schools and colleges, say that the fare here is the best they have ever known in a college. The Lady Principal plans to give the pupils the full worth of their money, and it is only by her wise management and careful personal supervision that the boarding department is not conducted at a decided loss. The cost per month for board, including all expenses except laundry and oil, is never over \$8 50.

No education is worthy the name that confines itself to

books alone. The body must be developed; the taste and manners must be cultivated.

By physical culture and open air games, we try to make our pupils strong in body, erect in carriage, and sound in health, believing in "a sound mind in a sound body."

We endeavor to have our pupils observe, in the dining hall and elsewhere, all the refinement and courtesy of manner that distinguish the best society. We believe that we have not fulfilled our duty to our pupils till we have done our best to render them entirely at ease with the most refined people. As a means to this end, all the pupils eat with the teachers in the same dining hall. We think it conducive to good manners to have young ladies and gentlemen eat at the same tables, and we encourage them, while in the dining hall, to converse together and with the teachers about subjects that will uplift as well as entertain.

At intervals during the session all our pupils will be invited into the parlors for an evening of social pleasure. We hope by this means to provide not only pleasure, but ease of manner and experience that will be helpful all through life.

There is no such thing as class distinction in this school. Nobody stops to consider whether a pupil is rich or poor. The richest pupil in the school will fall into disfavor if he misbehaves or neglects his duties; while some of the poorest we have had have been most highly esteemed, because, though poor in purse, they may be rich in character.

Library

The school library at present contains about 200 volumes of well selected literature, including "Webster's



PHILO-COLONIAN LITERARY SOCIETY

New International Dictionary" and a good encyclopedia. As funds are available new books will be added. Books or money for the Library will be greatly appreciated.

Reading Room

The reading room will be furnished with the leading magazines, daily newspapers, and several religious and county weeklies.

Literary Societies

Two literary societies are maintained for practice in debating, reading, reciting, declaiming, and parliamentary usages. The ciceronian, the young men's, society meets every Friday night. The Philo-Colonian for the young women meets once each week. One of the teachers is always present at these meetings to act as Critic and to render any helpful assistance.

The work of these literary societies is one of the most important features of the school work. All students of the Common and High School Departments are required to join one of these societies unless excused by their parents or guardians after consultation with the Principal of the School.

Departments of Instruction

Literary

In the Primary Department the work comprises reading, spelling, writing, and other exercises suitable for developing and interesting little minds. Then comes Primary Arithmetic, History, Geography, and English Lessons.

In the Intermediate Department the pupils are given more difficult work in all the above branches, and drawing is added.

In the Common School Department, the course comprises Advanced Arithmetic, Elementary Algebra, English Grammar, Geography, History of N. C., Physiology, U. S. History, First Latin Book, Reading, Spelling, Writing, Civil Government, and Drawing.

The High School course comprises Advanced Algebra and Geometry, Ancient, Mediæval and Modern History, English History, Cæsar, Cicero, Virgil, Latin Prose, Elements of Greek, Xenophon's Anabasis, Physics, Reading, Spelling, Bible, Elements of Rhetoric, Advanced Rhetoric, Standard Authors, with frequent exercises in original composition, French or German.

In all these departments, the chief aim is honest, faithful, thorough work. The complaint comes from all colleges and business schools that pupils come to them before they are prepared in English. In this school especial care is given to making the pupils thorough in spelling, punctuation, sentence structure and paragraphing. You will notice that all grades are required to study spelling and reading, because we find good spellers and readers to

be scarce. From the colleges we hear the complaint also that pupils offer themselves for higher work in Latin and Greek when they are deficient in the grammar. We insist that our pupils shall be thorough in fundamental principles before they attempt advanced work.

Especial attention will be given to writing and no student will be excused from this class except by permission of the Principal.

MUSIC

Pianoforte

The course of study in Pianoforte includes exercises and composition required for the most systematic development in execution and interpretation, both for teaching and artistic performance. Especial attention is paid to the development of a musical touch, a refined and intelligent style of playing. It will be the effort of the teacher to adapt the instruction to the personal needs of the student.

FIRST YEAR.—Technical work for correct arm, wrist, and finger movements, careful study of major scales, Gurlitt, Melody and Technic.

SECOND YEAR.—Minor scales; studies selected in the grade of the following: Duvernoy op. 176; Bertini, op. 100; Czerny, op. 139; and other compositions by standard composers at the discretion of the teacher.

THIRD YEAR.—Technical exercises for the development of flexibility and velocity. Practice of scales, chords,

arpeggi in various rythms; selected studies in the grade of the following: Czerny, op. 636 and op. 299; Heller, op 47; Krause Trill, Studies, op. 2; Bach, Little preludes. Easy sonatas and other compositions by standard composers

FOURTH YEAR.—Technical exercises continued. Practice of scales, chords, arpeggi with various accents, and rhythmical treatment. Dœring, Octave Studies; Cramer, Selected Studies; Bach, French Suites and Two-and-Three part inventions. Sonatas and other standard compositions.

Voice Culture

It is intended to teach every branch connected with the proper cultivation of the voice. The course includes such exercises as will give the student the proper use of the vocal organs, the control of the breath, the physiology of vowels and consonats, the application of the words to the music, etc.

FIRST YEAR.—Development of the chest; breath control and its influence on tone; breathing allied with attack, tone placing and tone formation; resonance; throaty, nasal, and white tones corrected.

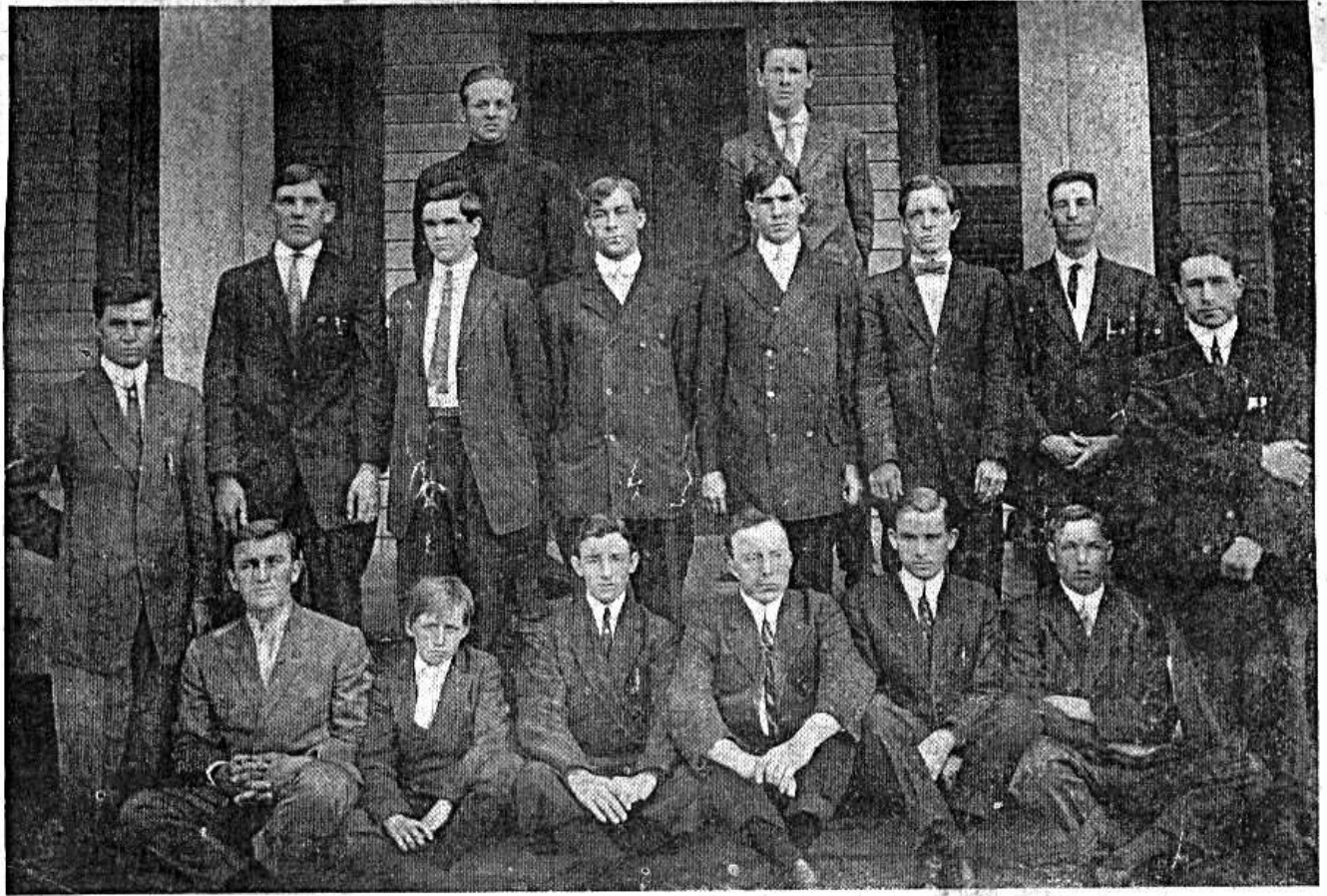
Studies, Behnke and Pearce; Concone.

SECOND YEAR.—Exercises for breath control; tone placing and tone formation continued; Staccato tone and attack; Sustaining tones, and supporting the voice or breath.

Studies by Concone; easy songs in English

THIRD YEAR.—Technical preparation; tone coloring; Treatment of vowels and consonants. Studies and songs selected by the teacher.

FOURTH YEAR.—Flexibility; tone coloring continued;



CICERONIAN LITERARY SOCIETY

treatment of vowels and consonants continued; interpretation, expression, phrasing, and enunciation. Studies and songs selected.

ELOCUTION

"Equal with him who writes a great poem is he who reads it well."

Elocution is the natural expression of thought by speech and gesture. It is important in physical development, in social life, in business life, and in public life.

In physical development, elocution demands correct posture and proper habits of breathing, affords healthful exercise for the throat and lungs, exercises vigorously the intercostal muscles, stimulates the circulation naturally, so that the organs of digestion and the entire physical system share in the benefits.

Our influence will be agreeable and effective largely in proportion as we train our voice and manner. Therefore the importance of the study of elocution upon the social life.

In business life, a training in elocution reflects reliability, character of tone, and dignity of manner upon our vocation or profession.

In public life, "it will enable us to give accuracy and fulness of meaning to our words, and to convey the spirit of the thought to the hearer."

Commercial

The commercial course embraces Spelling, Letter.

writing, English, Penmanship Arithmetic, Business Forms and Bookkeeping.

Bible

During the session of 1912-1913 the following books were studied: Old Testament History, The Primacy of State Missions, Southern Baptist Foreign Missions by T. B. Ray, and The Normal Manual for Sunday School Workers. Eleven Students completed "The Manual" and at the Commencement received the beautiful Convention Normal Diploma.

The Normal Manual for Sunday School Workers will be given during the session of 1913-1914. The needs of the class will be determined later and decision made as to what other subjects will be given.

EXPENSES

All Expenses Are Payable in Advance

TUITION IN ADVANCE BY THE MONTH	
Primary and Intermediate	----- \$1.50
Common School	----- \$2.00 to \$2.50
High School	----- \$3.00 to \$3.50
TUITION IN ADVANCE BY THE TERM 4½ MONTHS	
Primary and Intermediate	----- \$6.00
Common School	----- \$8.25 to \$10.50
High School	----- \$12.75 to \$15.00
TUITION IN ADVANCE BY THE SESSION OF 9 MONTHS	
Primary and Intermediate	----- \$11.50
Common School	----- \$16.00 to \$20.50
High School	----- \$25.00 to \$29.50
Incidental in advance by the month	----- 25c
Incidental in advance for half-session	----- \$1.00
Incidental in advance for session	----- \$2.00
BOARD IN ADVANCE	
By the month	----- \$ 8.50
By the half-session	----- \$37.00
By the session	----- \$71.50
MUSIC IN ADVANCE	
By the month including Piano Rent	----- \$3.00
By the half session including Piano Rent	----- \$12.75
By the session including Piano Rent	----- \$25.00
ELOCUTION IN ADVANCE	
By the month (Individual Instruction)	----- \$ 2.00

writing, English, Penmanship Arithmetic, Business Forms and Bookkeeping.

Bible

During the session of 1912-1913 the following books were studied: Old Testament History, The Primacy of State Missions, Southern Baptist Foreign Missions by T. B. Ray, and The Normal Manual for Sunday School Workers. Eleven Students completed "The Manual" and at the Commencement received the beautiful Convention Normal Diploma.

The Normal Manual for Sunday School Workers will be given during the session of 1913-1914. The needs of the class will be determined later and decision made as to what other subjects will be given.

EXPENSES

All Expenses Are Payable in Advance

TUITION IN ADVANCE BY THE MONTH	
Primary and Intermediate\$1.50
Common School\$2.00 to \$2.50
High School\$3.00 to \$3.50

TUITION IN ADVANCE BY THE TERM 4½ MONTHS	
Primary and Intermediate\$6.00
Common School\$8.25 to \$10.50
High School\$12.75 to \$15.00

TUITION IN ADVANCE BY THE SESSION OF 9 MONTHS	
Primary and Intermediate\$11.50
Common School\$16.00 to \$20.50
High School\$25.00 to \$29.50
Incidental in advance by the month25c
Incidental in advance for half-session\$1.00
Incidental in advance for session\$2.00

BOARD IN ADVANCE	
By the month\$ 8.50
By the half-session\$37.00
By the session\$71.50

MUSIC IN ADVANCE	
By the month including Piano Rent\$3.00
By the half session including Piano Rent\$12.75
By the session including Piano Rent\$25.00

ELOCUTION IN ADVANCE	
By the month (Individual Instruction)\$ 2.00

By the half session	“	“	-----	\$ 8.25
By the session	“	“	-----	\$16.00

Commercial—Charges of Common School Department.

Bible—No charges made.

Library fee for session ----- 25c

Ministerial students and the children of ministers will be given a discount of 50 per cent. from the regular charges in the Literary Department, and 25 per cent. in the Music and Elocution Departments.

No variations from above charges will be made except where more than one come from same family.

No deduction will be given for absence during the first week.

Protracted sickness for two weeks or more will entitle a student to a rebate.

Our Catalogue is Our Contract With Our Patrons

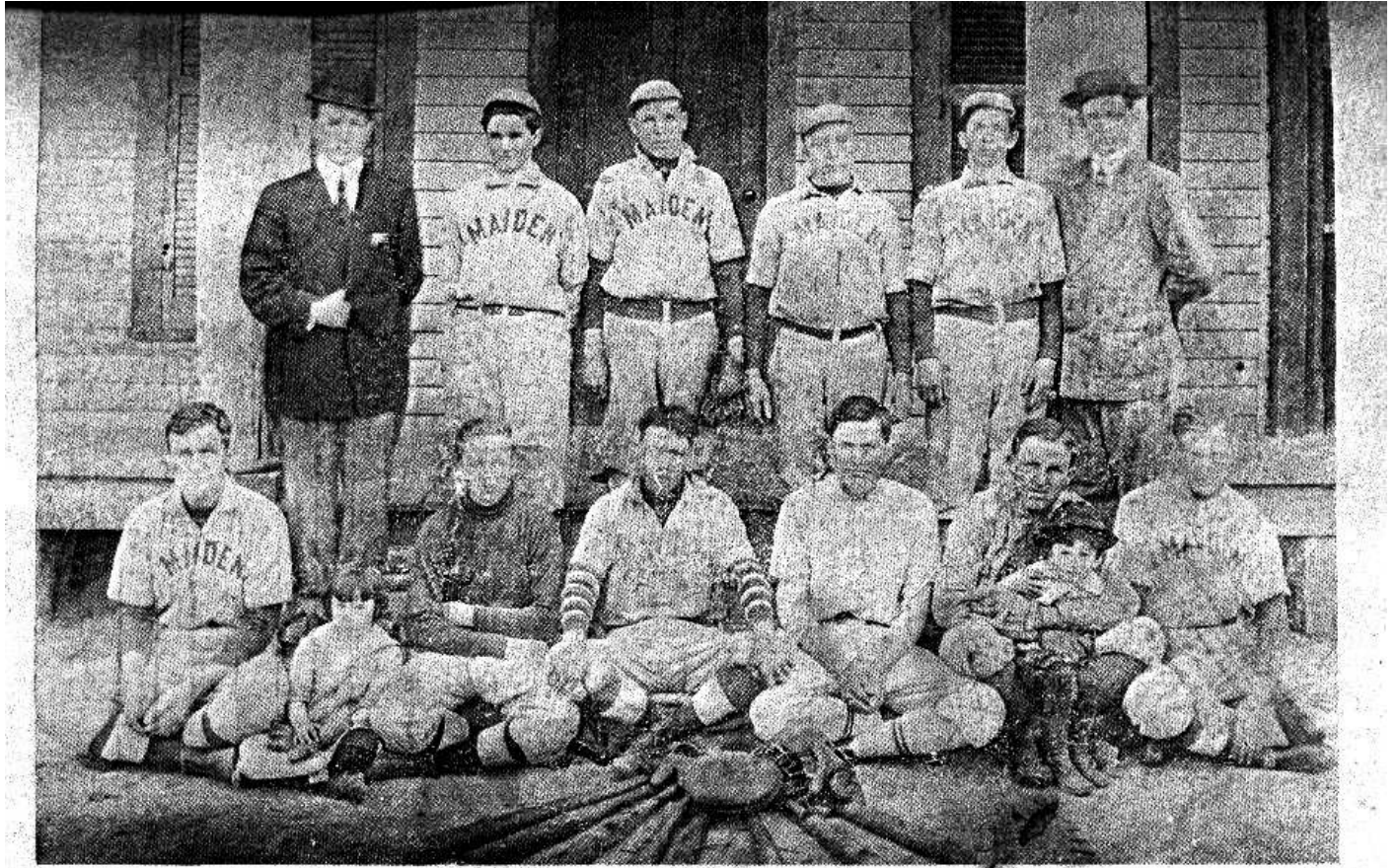
SOME REGULATIONS

The Board of Trustees by the recommendation of the Faculty, forbid smoking in the Dormitories and on the school grounds.

Boarding students are not allowed to go down town except at stated times, and then only on business.

Boarding students are allowed to visit only upon written request from parents.

Students are not wanted who will not cheerfully obey the simple requirements of the Dormitories.



BASE BALL TEAM

Cromer, Prima	Catawba
Cromer, Alleen	Catawba
Cox, Dina	Catawba
Cox, Julius	Burke
Curtis, Ethel	Caldwell
Canipe, Clifton	Catawba
Cansler, Ora	Catawba
Cansler, Grover	Catawba
Cansler, Della	Catawba
Cansler, Jake	Catawba
Cook, Dennis	Catawba
Cook, Raymond	Lincoln
Crooks, Susie	Lincoln
Cloninger, Summie	Catawba
Cloninger, Shuford	Catawba
Crow, Ivey	Catawba
Craig, Cordie	Gaston
Curlee, Preston	Catawba
Curlee, Glenn	Catawba
Curlee, Ross	Catawba
Curlee, Claude	Catawba
Forbis, Oscar	Mecklenburg
Floy, B. G.	Robeson
Harris, Ruth	Caldwell
Harris, M. I.	Caldwell
Honeycutt, Minnie	Greenville, Tenn.
Hewitt, George	Lincoln
Hewitt, Grady	Catawba
Hewitt, Henderson	Catawba
Hewitt, Bryan	Catawba
Hewitt, Glenn	Catawba
Hewitt, Clifton	Catawba

Hewitt, Floyd	Lincoln
Honeycutt, Edith	Catawba
Honeycutt, Nellie	Catawba
Honeycutt, Ruth	Catawba
Hilton, Maude	Catawba
Hilton, Birdie	Catawba
Hoove, Shasta	Gaston
Havener, Lillian	Catawba
Havener, Harvey	Catawba
Hoyle, Sam	Catawba
Hicks, Plato	Lincoln
Hicks, A. L.	Lincoln
Heffner, Leonard	Catawba
Heffner, Ray	Catawba
Heffner, Hubert	Catawba
Heffner, Reid	Catawba
Hudson, C. F.	Burke
Harris, Ada	Gaston
Holsclaw, John	Gaston
Josey, Clarence	Catawba
Johnson, Arabella	Catawba
Jones, Ernest	Lincoln
Kluttz, Paul	
Kluttz, Dole	
Kluttz, Stover	
Kluttz, Pruella	
Keener, Carr	
Kennet, Gertrude	
Keever, Ocie	
Keever, Avery	
Lineberger, C. A.	
Locke, Ernest	