

1954

THE QUARTERIAN

Billy Luffin



Dear Billy,

This is one of the hardest things I've ever had to do. So write in your annual for the last time.

Billy, I shall never forget the first time we met. For that matter there are many things I shall never forget. Yes, we've truly had some wonderful times together. Times that will always be among the sweetest and happiest in my memory.

Remember always:
"53" mercury; the edition of "our" paper; "53" Chevy + station wagon; our "Bear Grass" trip; our youth prayers meetings and our talks;

Above all, always remember God is the best friend you'll or I'll with ever have.

Good. by Brother Billy. never forget me and always hold a spot in your heart for your —
"Sid Arge"

Remember me when on this page you look

Remember it was a very dear friend who wrote this in your book.

Sandra L.

We Present

THE



1954

QUARTERIAN

SWAN QUARTER HIGH SCHOOL
Swan Quarter, North Carolina

DEDICATION



To Mrs. Lupton, our business education teacher, who has been an understanding friend with a wonderful sense of humor, we, the Senior Class of 1954, dedicate this volume of The Quarterian.



EDITORS



MANAGERS

ANNUAL STAFF

Editor-in-Chief	Jane Harris
Associate Editor	Norma Sparrow
Art Editor	Argie Lee Payne
Business Manager	Rosetta Spencer
Typists	Lenora Bright, Annette Carawan Shelby Smith, Kay Smith, Glade Sears
Annual Sales Manager	Hazel Gibbs
Photographer	Marlylin Gibbs
Advertisement Manager	Ralph Swindell
Ads Solicitors	Murray Cartwright, Edison Cahoon, Floyd Williams Doris Tunnell, Kay O'Neal, Roger Swindell Murl Carawan, Betty Jean Spencer
Advisors	Mrs. Carolyn Harris, Mrs. Frostie Lupton

TYPISTS



AD SOLICITORS



FACULTY

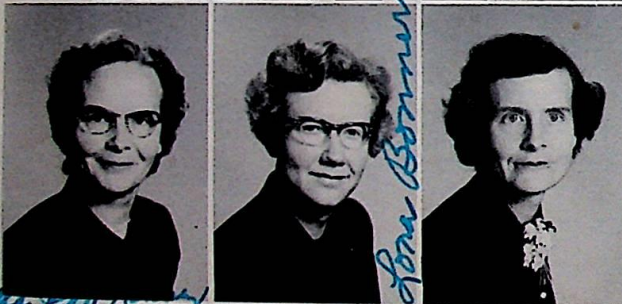
W. G. JOYNER
Principal
Science, History



J. M. WORRELL
Agriculture
MISS PAULINE MOORE
Home Economics
MRS. MARINA BAUM
English, Biology



MRS. FROSTIE LUPTON
Business Education
MRS. CAROLYN HARRIS
Math, French
MRS. MAYSEL SAWYER
Eighth Grade



MRS. M. MCKINNEY
Sixth and Seventh Grades
MISS LONA BONNER
Fourth and Fifth Grades
MRS. N. MCKINNEY
Third and Fourth Grades



MRS. COCHRAN
First and Second Grades
MISS BETTIE SWINDELL
Supervisor

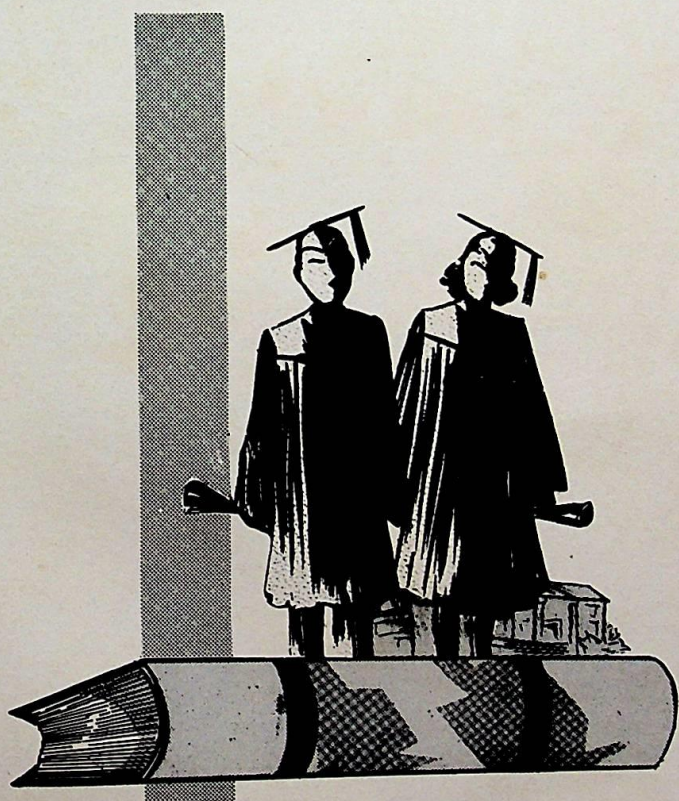
Marina Baum

Lona Bonner

Billy, you are a
fine boy and
I certainly do like
you. I wish for all the
success and happiness.
Come to "Carolina" and
see me next year.
A friend,
Rosetta

I have enjoyed teaching you very much.
My best wish for you is everything
good life has to offer.
Mazel Fairman

S E N I O R S



MASCOTS

Loretta Hodges
Allen Thomas Credle



SENIOR CLASS



OFFICERS

- | | |
|---------------------------|----------------|
| Murl Carawan | President |
| Glade Sears | Vice President |
| Argie Lee Payne | Secretary |
| Annette Carawan | Treasurer |
| Kay O'Neal | Reporter |



SENIORS

LENORA R. BRIGHT

"Her mind is here but her heart is elsewhere."
 F. H. A. 1-3, Officer 2, Convention 2; Beta Club 2-4, Officer 3, Convention 3; Class Officer 1; Glee Club 1-4; Reflector Staff 3; Annual Staff 4; Class Queen 1.

EDISON CAHOON

"Work fascinates me; I can sit and look at it for hours."
 Baseball 1-4; F. F. A. 3-4.



ANNETTE CARAWAN

"Winsome and gracious--always a lady."
 Basketball 1-2-4; Cheerleader 1; F. H. A. 3-4; Glee Club 3-4; Reflector Staff 3; Annual Staff 4; Librarian 4.

MURRAY CARTWRIGHT

"After four years of faithful service, I'm laid off."
 Softball 1-2; Basketball 2; F. F. A. 3-4; Social Science Club 2-3; Reflector Staff 3; Class Play 3; Senior Play 4.

HAZEL GIBBS

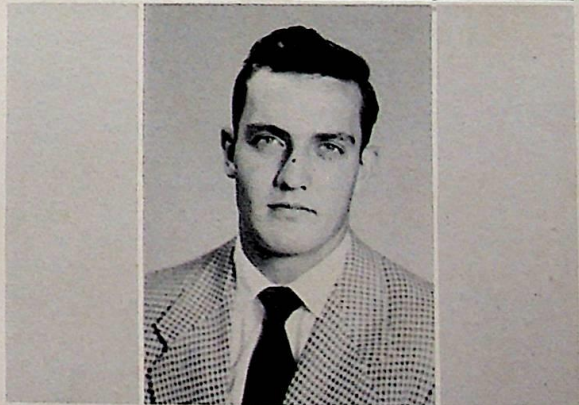
"Don't be afraid of opposition. Remember, a kite rises against, not with, the wind."
 F. H. A. 1-4; Basketball 1; Glee Club 1-4; Class Officer 2; Reflector Staff 3; Social Science Club 3; Senior Play 4; Annual Staff 4; Librarian 4; Beta Club 3-4.

MARLYLIN GIBBS

"Hazy is her mind since he is away."
 F. H. A. 1-3; Glee Club 1-4; Beta Club 2-4, Officer 4, Convention 3; Annual Staff 4; Reflector Staff 3.

MURL CARAWAN

"He who sitteth on a tack, yea, he shall rise."
 F. F. A. 1-4, Officer 1-4; Basketball 1-4; Captain 4; Baseball 1-4, Captain 3; Marshal 2-3; Social Science 3, Officer 3; Class Officer 3-4; Reflector Staff 3; Bus Driver 4; Annual Staff 4; Junior Play 3; Senior Play 4.



SENIORS

JANE HARRIS

"Tiny as a pearl, but with a definite goal."

F. H. A. 1-3, Officer 2; Softball 1-2; Cheerleader 1-4; Chief 4; Glee Club 1-3; Beta Club 2-4, Officer 3-4, Convention 3; Social Science Club 3; Junior Play 3; Reflector Staff 3; Senior Play 4; Annual Staff 1-4.

GLADE SEARS

"Looks pious, but looks are deceiving."

Cheerleader 1; Basketball 1-2-4; Beta Club 3-4, Officer 3; Class Queen 3; Glee Club 3; F. H. A. 3; Librarian 4; Senior Play 4; Class Officer 4; Annual Staff 4.

AMELIA O'NEAL

"With that merry and carefree air, you can always tell when she is there."

4-H Club 1-2; Basketball 1-4; Cheerleader 1; F. H. A. 3-4; Glee Club 3-4; Reflector Staff 3; Junior Play 3; Librarian 4; Annual Staff 4; F. H. A. Officer 3.

KAY O'NEAL

"Friendliness is a virtue--not something bought."

F. H. A. 1-4; Officer 2-3, Convention 1; Glee Club 1-3; Class Officer 2-4; Basketball 2-4; Softball 1-2; Reflector Staff 3; Social Science Club 3; 4-H Club 1-3; Senior Play 4; Annual Staff 4; Librarian 4



KAY SMITH

"Life is easy, smooth and slow, do what comes and let the rest go."

4-H Club 1-3; Class Officer 1-3; Social Science Club 2-3; Student Government 1; Class Play 2; Glee Club 3; Basketball 1-2; Softball 1-2; Reflector Staff 3; Annual Staff 4.

SHELBY SMITH

"Laugh and the world laughs with you."

4-H Club 1-3, Officer 1-3; Basketball 1-2; Class Officer 1-3; Student Government 1; Marshal 1-2; Social Science Club 2-3; Softball 1-2; Glee Club 3-4; Reflector Staff 3; Senior Play 4; Annual Staff 4.

ARGIE LEE PAYNE

"Never speak sense when nonsense will answer the purpose as well."

F. H. A. 1-4, Officer 1-3; Cheerleader 1-4; Class Queen 2; Social Science Club 3; School Bus Club 4, Substitute Bus Driver 4; Glee Club 1-4; Reflector Staff 1-4; Annual Staff 2, 4; Junior Play 3; Senior Play 4; Class Officer 4.



SENIORS

NORMA SPARROW

"All great women die and I don't
feel so well myself."

F. H. A. 3, Officer 3, Convention 3; Basketball 1-4; Junior Play 3; Cheerleader 1; 4-H Club 1-2; Class Officer 3; Reflector Staff 3; Glee Club 3; Beta Club 3-4, Officer 4; Librarian 4; Carnival Queen 4; Safety Patrol 3-4; Annual Staff 4.

BETTY JEAN SPENCER

"Generally the woman chooses the
man that will choose her."

F. H. A. 1-4, Convention 3; 4-H Club 1; Glee Club 1-3, Softball 1; Reflector Staff 3.

RALPH SWINDELL

"To most people nothing is more troublesome
than the effort of thinking."

F. F. A. 1-4, Officer 4, Convention 2; Basketball 1-4; Baseball 3-4; Class Play 3-4; Social Science 3; Bus Driver 2-3; Annual Staff 4.

FLOYD WILLIAMS

"Who in his pocket hath no money, in
his mouth he must have honey."

F. F. A. 3-4; Class Officer 1; Softball 1; Student Government 1; Basketball 1-3-4, Co-Captain 4; Baseball 3-4, Co-Captain 4; Glee Club 3; Class Play 3; Social Science Club 3.



ROGER SWINDELL

"I must have women - there is nothing
unbends the mind like them."

F. F. A. 1-4, Officer 1-4, Convention 3; Class Officer 1; Marshal 1; Basketball 2-4; Reflector Staff 3; Junior Play 3; Bus Driver 3-4; Social Science Club 3; Senior Play 4; Annual Staff 4.

DORIS TUNNELL

"Bubbling over with laughter and fun,
with never a worry for work undone."

F. H. A. 1-3; Cheerleader 4; Social Science Club 3; School Bus Club 4, Senior Play 4; Reflector Staff 3; Softball 1-2; Glee Club 1-4; Safety Patrol 3-4; School Bus Substitute 4.

ROSETTA SPENCER

"The greatest pleasure in life is to do a good
deed in secret and have it discovered by accident."

F. H. A. 1-3, Officer 2, State Convention 1; Class Officer 1-3; Glee Club 1-4; Marshal 1-3, Chief 3; Beta Club 2-4, Officer 3-4, Convention 3; Reflector Staff 3; Junior Play 3; Carnival Queen 3; Social Science Club 3; Senior Play 4; Substitute Bus Driver 4; Annual Staff 4; Librarian 4.



CLASS PROPHECY

After many years of hard work I, Argie Lee Payne, have become one of the world's best-known artists. When I became in need of a secretary, I began to make inquiries for one and I hired Norma Sparrow, who had just won the title "Miss Secretary of 1960." We have been constant companions since and are now in Paris.

There is a mist of rain, but we have to go to lunch, so we proceed. As I stagger through the hazy air, I bump into someone and lose my balance. The gentleman who knocks me down and no sooner helps me up is none other than Roger Swindell. He has become the comedian and clown with the Barnum Bailey Circus. He has just finished a tour in the United States and is now taking a vacation in France. While talking to him we learn that on his tour he met most of our classmates, and he proceeds to tell us their whereabouts.

Jane Harris' greatest desire has come true and she is head nurse at Duke Hospital, Durham, North Carolina.

Kay O'Neal, Kay Smith, and Annette Carawan are thrifty little secretaries for Floyd Williams, head investigator for the F. B. I. in Washington, D. C.

Rosetta Spencer has become a dental hygienist for Dr. Liverpill in New York City and is eagerly awaiting June when she will become Mrs. Liverpill.

Edison Cahoon, a Grand Ole Opry star, has just written "Hambone and Gravy Waltz," which has been a nation-wide hit with all the teen-agers.

Ralph Swindell, a prominent citizen of Swan Quarter has an enormous used car lot in which he sells everything from Rolls Royces to Henry J's.

Murray Cartwright, a lieutenant colonel, in the United States Air Force is stationed at Randolph Field.

Murl Carawan, head salesman for the Strietman Biscuit Company in Virginia, has been asked to help the chief chef turn out a new cookie that will be easy to digest for people with ulcers.

Amelia O'Neal in her quiet unassuming manner is the most efficient secretary in the office of the principal of Swan Quarter School.

Hazel Gibbs has just written "Wake up over There" dealing with the problems of children and their parents and is now lecturing to P. T. A. meetings all over the United States and Canada.

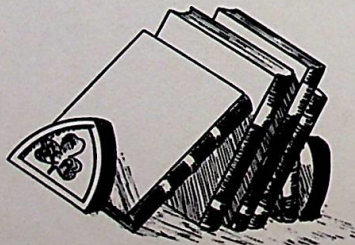
Glade Sears is a noted lab technician in San Francisco, California.

Shelby Smith is assisting her husband with the managing of the Sportsman's Club in Fairfield.

Doris Tunnell is an air line hostess for T. W. A. and is seeing the world through the clouds.

Marlylin, Lenora and Betty Jean, who in their senior year became mesdames Gibbs, Bright, and Spencer, have been devoting these years to becoming efficient homemakers and active leaders in civic and church activities in their respective communities.

Prophetesses: Argie Lee Payne
Norma Faye Sparrow



LAST WILL AND TESTAMENT

We, the Senior Class of Nineteen Hundred and Fifty-Four of Swan Quarter High School, in the County of Hyde, the State of North Carolina, being of sound mind, and realizing our impending departure from this school, do hereby declare and make this our last will and testament.

ARTICLE I

To the faculty, we leave our deepest appreciation for their efforts toward increasing our wisdom.

ARTICLE II

To our parents and friends we give credit for our good record. They have our love always.

ARTICLE III

To the Juniors we leave the job of issuing THE QUARTERIAN and all the good times as well as the hard times we had in our Senior year.

To the Sophomores and Freshmen, we leave our hopes that before long they will occupy the positions that we now occupy.

ARTICLE IV

Individual Bequests: During our years of school we have accumulated some well-known attributes which we should like to bestow upon specific underclassmen. They are as follows:

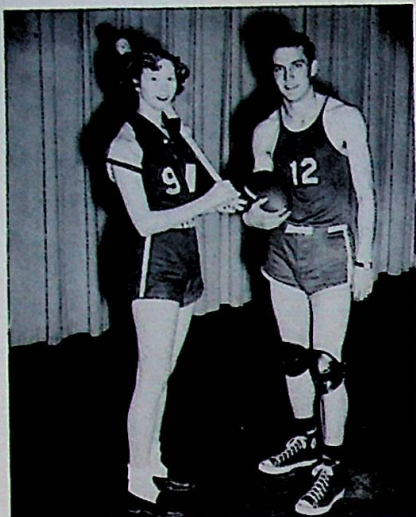
- Item 1. Roger Swindell wills his "Wise Remarks" to Junior Harris.
- Item 2. Ralph Swindell wills the office to the principal of next year.
- Item 3. Murray Cartwright leaves his dignity to Jimmy Williams.
- Item 4. Edison Cahoon leaves his reading interest to Donald Credle.
- Item 5. Murl Carawan leaves his place as Captain of the Basketball team to Z. B. Midyette.
- Item 6. Floyd Williams leaves his height to Billy Joe Cutrell.
- Item 7. Lenora Bright, Marlylin Gibbs, and Betty J. Spencer leave their ability to catch a husband to whoever wants one.
- Item 8. Jane Harris and Argie Lee Payne leave their ability to talk to Lois Ann Sander-son and Tap Armstrong.
- Item 9. Kay Smith leaves her soft tone of voice to Jimmy Brickhouse.
- Item 10. Doris Tunnel leaves a few of her dates to Dorothy Hudson.
- Item 11. Amelia O'Neal and Shelby Smith leave their dignity to Sally Ann Harris and Louise Spencer.
- Item 12. Norma Sparrow leaves "Queen of the Carnival" title to Betty Mann.
- Item 13. Rosetta Spencer wills her study habits to Nathan Sears.
- Item 14. Kay O'Neal leaves her ability to get tickled easily to Cottie Garrish.
- Item 15. Hazel Gibbs leaves her desire to write a best-seller to Barbara Sadler.
- Item 16. Glade Sears leaves her long tresses to Evalena Gray.
- Item 17. Annette Carawan leaves her sportsmanship to Christene Cox.

We hereby appoint Mr. W. G. Joyner, our principal, as sole executor of this, our last will and testament.

In witness whereof, we, the Senior Class of 1954, do set seal on this, the first day of June, in the year of our Lord, Nineteen Hundred and Fifty-Four.

Testatrixes: Shelby Smith
Lenora Bright

SENIOR



MOST ATHLETIC
Amelia O'Neal, Murl Carawan



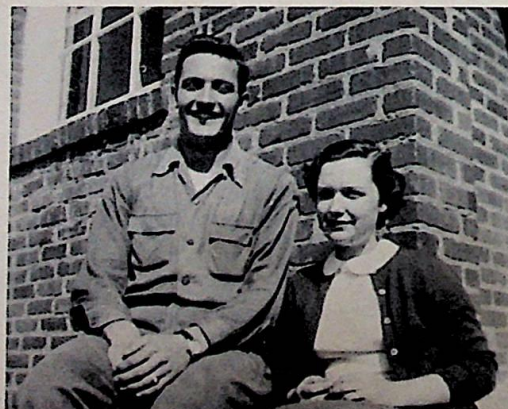
MOST STUDIOUS
Rosetta Spencer



BEST PERSONALITY
Argie Lee Payne



MOST INITIATIVE
Jane Harris



BEST LOOKING
Rosetta Spencer, Murl Carawan

SUPERLATIVES

FRIENDLIEST
Roger Swindell, Argie Lee Payne



MOST AMBITIOUS
Jane Harris



MOST DIGNIFIED
Shelby Smith

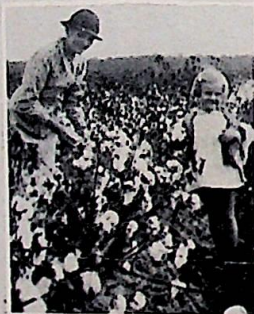


BEST SPORTS
Ralph Swindell, Annette Carawan



CUTEST
Glade Sears, Roger Swindell

WHEN WE WERE VERY YOUNG



1. Annette Carawan 2. Kay Smith 3. Doris Tunnell 4. Glade Sears 5. Marlylin Gibbs 6. Norma Sparrow 7. Shelby Smith 8. Rosetta Spencer 9. Floyd Williams 10. Argie Lee Payne 11. Jane Harris 12. Ralph Swindell 13. Lenora R. Bright 14. Roger Swindell 15. Hazel Gibbs 16. Kay O'Neal 17. Murl Carawan.

"May 24, 1954"

Dear Billy,

So this school year of 53-54 comes to a close, & sure do see many in terms with us.

Bill you really have been a wonderful, cousin and friend to have. I think you are a very nice boy. Always remain that way and the best will be yours.

I hope you enjoy your high school days as much as much as I. Remember you can always have those days over in a life time.

Bill I have really enjoyed going to board ball games with you all. (Remember my two points)! I have also enjoyed going to Belhaven with you on Sunday's and Saturday's. Remember the day we changed the score years ago long since to the other!!

Don't forget all of the rides in the station wagon and the "Blenny".

Wishes to me have a good time on our trip to Mason Head City?? (Although we didn't have a pass to go in Blenny Point)

Remember the 53' Mercury and the addition of the girl paper and Arjie really would make a great article!!

I've always remembered Christ mas of 53' wasn't we? I've always had the mumps, and also what Mildred said on the school bus.

We also enjoyed mowing the yards, with you. Remember the night we went to Columbia to a ball game had two flat tires?

Oh! yes, had you taking pictures haven't we?? I really can make good Pecan pie, can't we??

Remember the day we all started to the board ball tournament what happened.

Bill, I've enjoyed being in prayer meeting so much with you. I suppose, will take over when Arjie & King leave. Remember me singing.

(over)

J
U
N
I
O
R
S



JUNIOR SUPERLATIVES



Most Likely To Succeed



Most Popular



Most Energetic



Prettiest Most Amiable



Most Studious



Most Dependable



Quietest



Wittiest



Best Athlete



Best Dressed



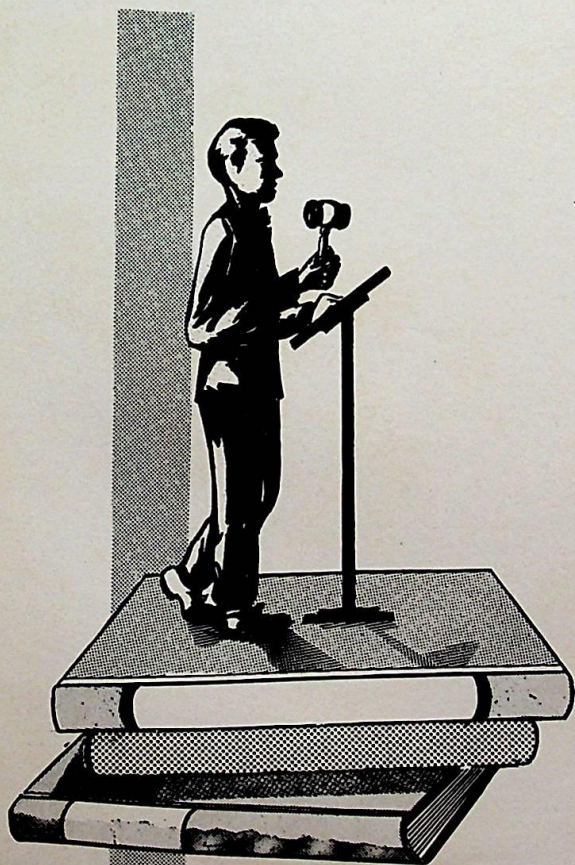
Most Conservative



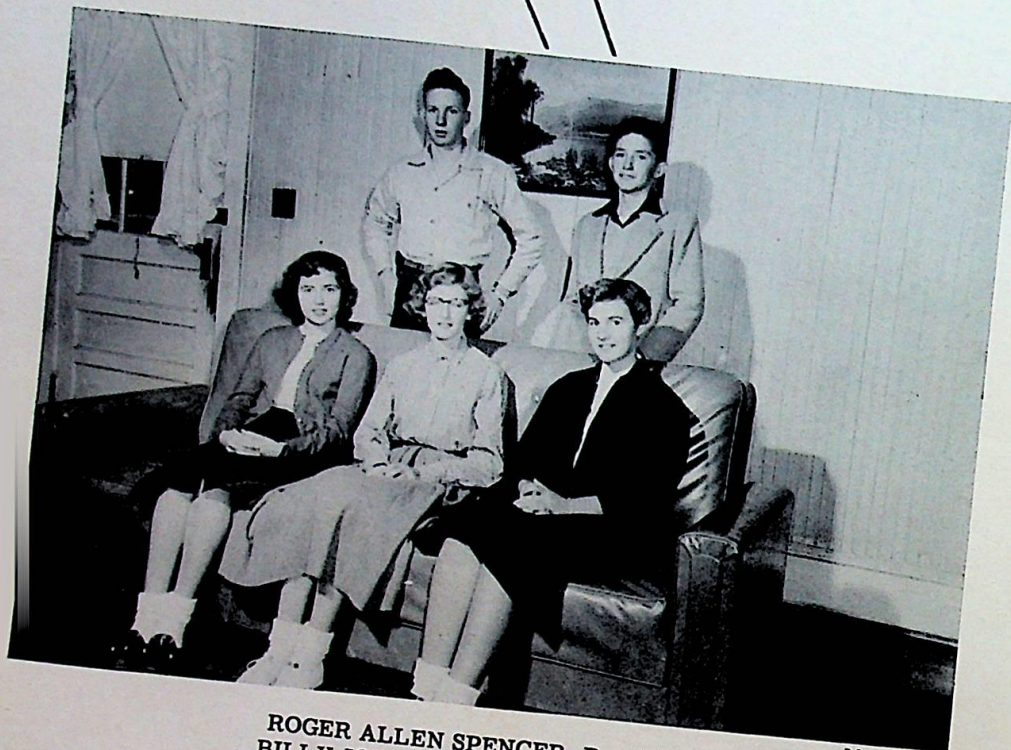
Best Dancer

Billy -
Here's wishing you a happy year
now and during high school. Be
good -
Liz. L.

SOPHOMORES



SOPHOMORE CLASS OFFICERS



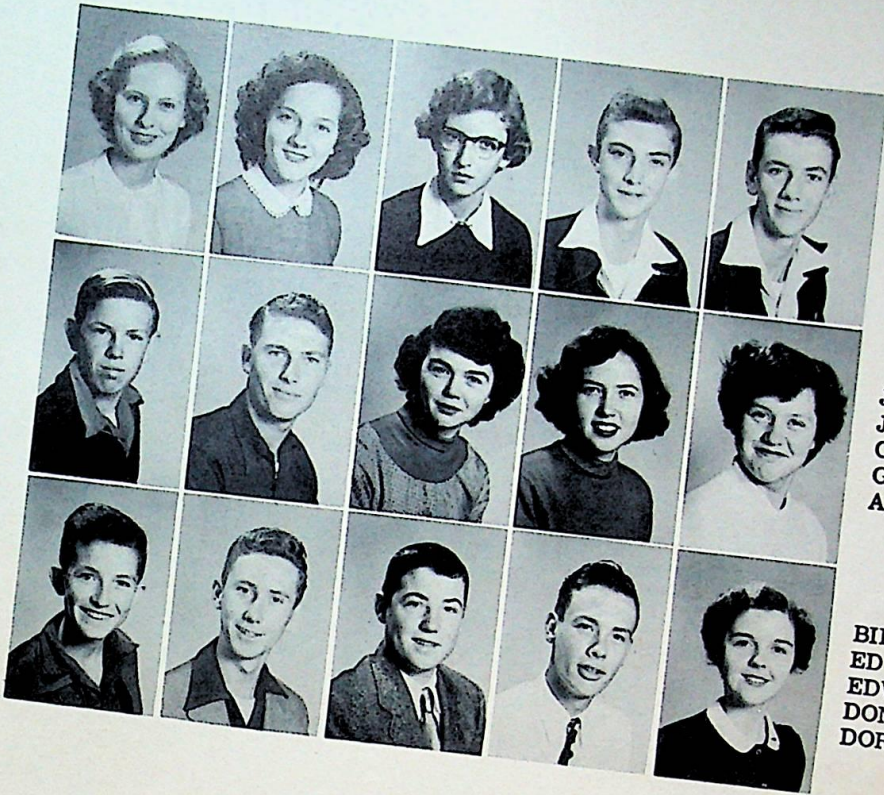
ROGER ALLEN SPENCER, President
BILLY JOE CUTRELL, Vice President
POLLY BERRY, Secretary
ELIZABETH SPARROW, Treasurer
GRACIE CARAWAN, Reporter

SOPHOMORES

SENORITA ARMSTRONG
FRANKIE BAYNOR
POLLY BERRY
WAYNE BERRY
WAYNE BELL

JIMMIE BRICKHOUSE
JOHN BRICKHOUSE
CLAUDIA CARAWAN
GRACIE CARAWAN
ALICE CUTHRELL

BILLY JOE CUTRELL
ED GLENN CUTRELL
EDWARD ROY CUTHRELL
DONALD CREDLE
DOROTHY DAWSON



EVALENA GRAY
MARY LOUISE GIBBS
ANNA MAE HARRIS
JUNIOR HARRIS
Z. B. MIDYETTE

RUTH O'NEAL
JOSEPHINE RABURN
DALE SADLER
LOIS SANDERSON
LESLIE SIMMONS

ELIZABETH SPARROW
ROGER ALLEN SPENCER
SYBIL SWINDELL
NELSON WATSON
WALTER WHEELER



SOPHOMORE SUPERLATIVES



Most Industrious



Most Studious



Most Serious



Best Personality



Basketball Stars



Best Leader



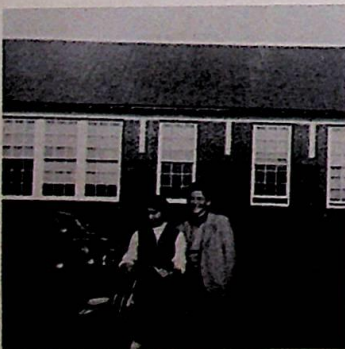
Biggest Flirts



Quietest



Wittiest



Cutest



Most Familiar Sight



Most Bashful

Billy,
 it has been
 a pleasure riding
 with you on the school bus
 you are a nice person and I
 think it is a pleasure to be
 one of your friends. Don't forget
 "Sing-it-all" in church. Always
 remember the invitation to join the Women's
 group.
 A friend,
 Cecelia

I've enjoyed being in school
 with you this year Billy.
 It's been nice knowing you.
 Thomas

Billy
 we enjoyed going to
 school in S. B. H. &
 hope to see you next year

Bob



**F
R
E
S
H
M
E
N**

FRESHMAN CLASS OFFICERS



DOROTHY MASON, President
BETTY LEE, Vice President
AUDREY FISHER, Secretary
SANDRA SWINDELL, Treasurer
CAROL WILLIAMS, Reporter
CHARLIE ROBERTS, Parliamentarian

FRESHMEN



DELBERT CAHOON
GRACE CARTWRIGHT
DELORES CUTHRELL
DOROTHY HUDSON
BENNETT EMORY

AUDREY FISHER
JIMMY FORTESCUE
COTTIE GARRISH
SALLY ANN HARRIS
CECELIA JENNETTE

BETTY LEE
WALTER MANN
DOROTHY MASON
RUDOLPH MIDYETTE
BOBBY O'NEAL

EDWARD O'NEAL
EDWARD PEGRAM
CHARLIE ROBERTS
SCOTT ROBERTS
OLA ROSS



BOBBY RAY SANDERSON
NATHAN SEARS
LOUISE SPENCER
JOSEPH SPRING
ROYCE GIBBS

SANDRA SWINDELL
CAROL WILLIAMS
JIMMY WILLIAMS

FRESHMAN SNAPS



Homework Tonight



Careful Now



Harmony



In Your Seats, Boys



Oh, for a Seat on the Sofa



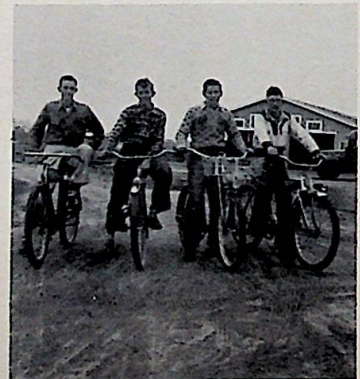
No School Today



Daily Routine



Out for a Goose



Bicycle Race

ACTIVITIES



CHEERLEADERS



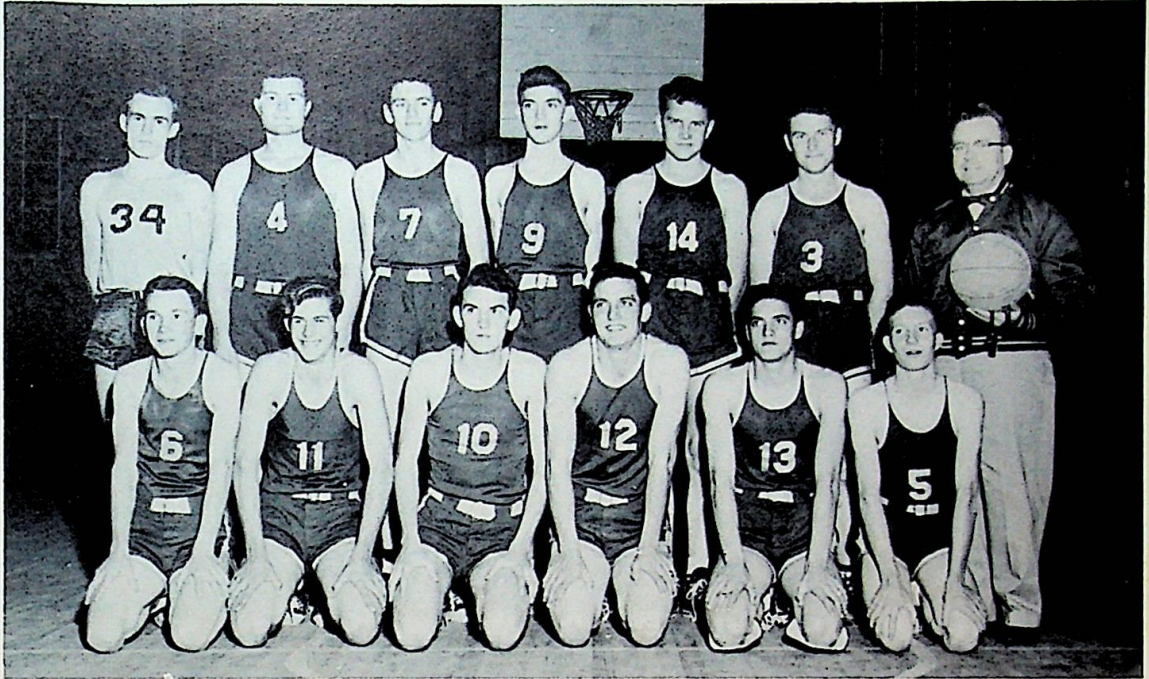
Doris Tunnell, Jane Harris; Chief, Cecelia Jennette, Sally Ann Harris, Argie Lee Payne, Polly Berry.

BASEBALL SQUAD



COACH, J. M. Worrell

BOYS' BASKETBALL



Ralph Swindell, Z. B. Midyette, Floyd Williams, Co-Captain; Murl Carawan, Co-Captain; Mack Carawan, Roger Spencer, Charlie Roberts, Victor Jennette, Wayne Bell, Wayne Berry, Walter Wheeler, John Brickhouse, Coach Worrell.

GIRLS' BASKETBALL



Christene Cox, Co-Captain; Audrey Fisher, Betty Mann, Audrey Smithwick, Captain; Anna M. Harris, Mary Louise Gibbs, Annette Carawan, Norma Sparrow, Coach Joyner, Margaret Baynor, Metta Carawan, Glade Sears, Hazel Credle, Sybil Swindell.

BETA

CLUB



LEADERSHIP

ACHIEVEMENT

CHARACTER

NEWSPAPER STAFF

BETTY MANN, Editor in Chief
 MONNA LOU CARAWAN, Associate Editor
 BEN BLAKE, Art Editor
 MRS. MARINA BAUM, Advisor



TED CAHOON, Mimeograph Operator
 JIMMIE SPENCER, Assistant

AUDREY SMITHWICK, Business Manager
 MARGARET BAYNOR, Assistant

METTA CARAWAN, Sales Manager
 MARLIS SEARS, Assistant

TYPISTS

BEN BLAKE, MARGARET BAYNOR
 JIMMIE SPENCER

MARLIS SEARS, AUDREY SMITHWICK
 CHRISTINE COX, MACK CARAWAN

NETTIE BRICKHOUSE, BETTY MANN
 OLA DODGE, METTA CARAWAN

PATRICIA BAUM, HAZEL CREDLE
 BARBARA SADLER, MONNA LOU CARAWAN

MRS. FROSTIE T. LUPTON, Advisor



SCHOOL SERVICES



BUS DRIVERS



LIBRARIANS



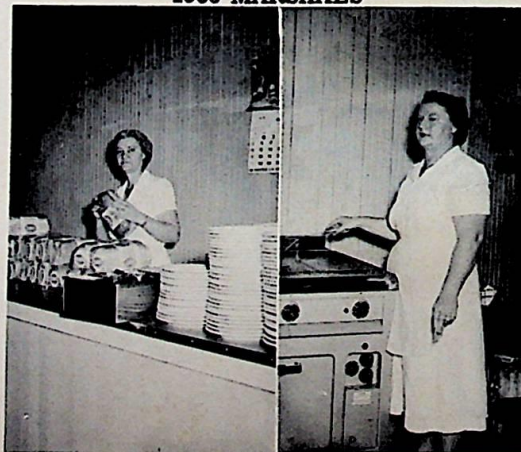
SAFETY PATROLS



1953 MARSHALS



SUBSTITUTE DRIVERS



LUNCH ROOM SUPERVISORS

FUTURE HOMEMAKERS OF AMERICA



FUTURE FARMERS OF AMERICA



FUTURE FARMERS OF AMERICA



PARLIAMENTARY PROCEDURE TEAM

J. M. Worrell, Advisor; Roger Swindell, Sentinel
Ed Glenn Cutrell, Sec.; Murl Carawan, Vice Pres.
Jimmie Spencer, Pres.; Ralph Swindell, Treas.
Mack Carawan, Reporter.



SEED JUDGING TEAM

Jimmie Brickhouse, Junior Harris, Roger Allen
Spencer.



TOOL IDENTIFICATION TEAM

Billy Joe Cutrell, Roger Allen Spencer, Jimmie
Brickhouse.



CLASSROOM STUDY

Ed Glenn Cutrell, Donald Credle, Leslie Simmons,
Victor Jennette, Ben Blake, Mack Carawan, Milton
Pittman, Roger Swindell, Murl Carawan, Jimmie
Spencer, Ralph Swindell, Z. B. Midyette.



F. F. A. SUPERVISED PRACTICE
Tim Berry, J. M. Worrell



F. F. A. RECREATION
Mr. and Mrs. Worrell, Sandra Swindell, Amelia
Worrell, Mr. and Mrs. Gratz Spencer, Jimmie
Brickhouse, Roger Allen Spencer, Edison Cahoon,
Edward Cutrell, Marvin Ray, Betsy Lee.

FUTURE HOMEMAKERS OF AMERICA



OPEN HOUSE 1954



MOTHER-DAUGHTER BANQUET

PURPOSES

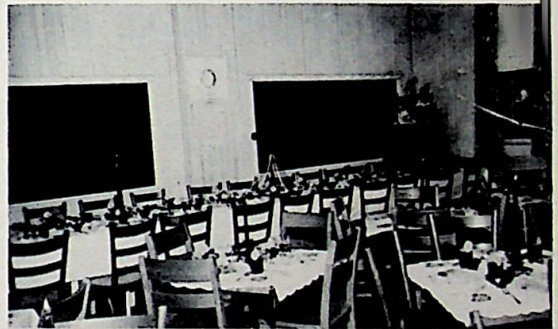
1. To promote a growing appreciation of the joys and satisfactions of homemaking.
2. To emphasize the importance of worthy home membership.
3. To encourage democracy in home and community life.
4. To work for good home and family life for all.
5. To promote international good will.
6. To foster the development of creative leadership in home and community life.
7. To provide wholesome individual and group recreation.
8. To further interest in home economics.

CREED

We are the Future Homemakers of America
We face the future with warm courage,
And high hope.

For we have the clear consciousness of seeking
Old and precious values.
For we are the builders of homes,
Homes for America's future.
Homes where living will be the expression
of everything
That is good and fair.
Homes where truth and love and security
and faith
Will be realities, not dreams.

We are the Future Homemakers of America
We face the future with warm courage
And high hope.



MOTHER-DAUGHTER BANQUET



OPEN HOUSE 1954



4-H CLUB

OFFICERS

BETTY MANN, Senior President
 POLLY BERRY, Senior Secretary
 JIMMIE WILLIAMS, Senior Vice President

MYLA BAUM, Junior President
 REBECCA SMITH, Junior Secretary

SUE SWINDELL, Elem. President
 JOHN JAY HARRIS, Elem. Vice President
 JOYCE WHEELER, Elem. Secretary

EARL TOPPING, Leader
 MRS. CARRIE JOYNER, Leader

ELEMENTARY 4-H CLUB

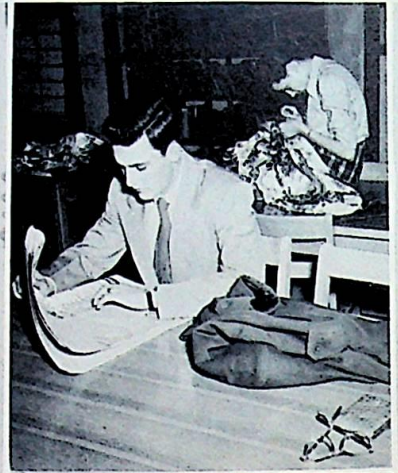
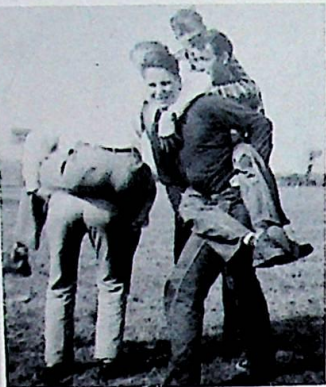


JUNIOR-SENIOR 4-H CLUB



KING AND QUEEN

SNAPSHOTS



E L E M E N T A R Y

I enjoyed
 Billy, going to school
 with you this year
 has been lots of fun
 but at times I would
 like to knock
 your block
 off.

a friend
 -
 enemy.

Patricia

Billy,
 I have enjoyed
 every moment at
 Swan Quarter this
 year. I'm looking for
 another year and
 hoping it will be
 as enjoyable ^{as my 1st}
 one.

what a lucky
 gal when you
 get married
 she will be

Dumb, poor,
 no ink,
 dumb girl,
 can't think,
 Jane

Billy,
 I have enjoyed
 going to school with
 you all these years
 and guess we will
 go to school four
 more years together
 good luck,
 "Paris"

Here is wishing you
 the best of all
 wishes for the
 near future
 a friend + sometimes
 enemy (S.P.)
 Sandra
 Gonselle

(wished you in happy
 memory (S.P.))

Billy,
 I have enjoyed going to school
 with you this year, tho at times
 I could have killed you for
 thumping me on the head or
 hitting me on the back. maybe
 you will be nicer to Jean's
 Rebecca:

"See ya around"
 "Evelyn"

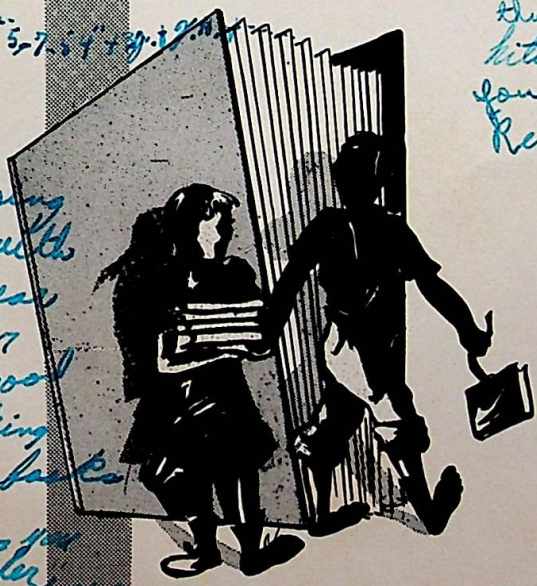
when you get married
 and live down south
 remember me & my big
 mouth

Betty Simmons

Billy,
 I've
 enjoyed going
 to school with
 you this year
 I'll never
 forget the good
 times picking
 books up back
 and fitting you
 and you plugging
 me.

See you around

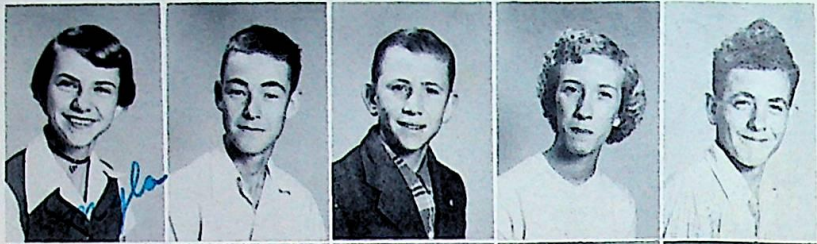
Margaret



*"To the smartest student
I know!"*

EIGHTH GRADE

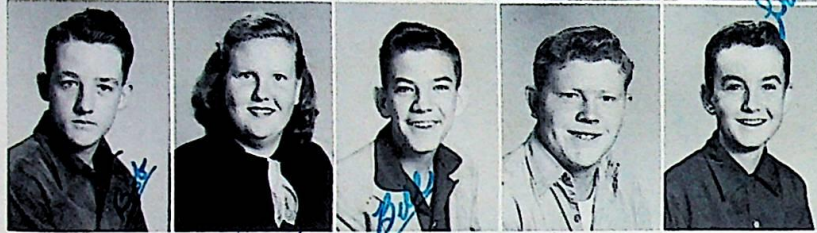
MYLA BAUM
STEPHEN BERRY
WILLIAM BROOKS
DINA CAHOON
MERLIN CARAWAN



SHERLIN CARAWAN
WARREN CARAWAN
MARGARET CREDLE
DOROTHY CUTHRELL
MARY JANE CUTRELL



BOBBY DUNBAR
LINDA GIBBS
BILLY GRIFFIN
G. B. HARRIS
ELAND HARRIS



Love Linda
*"Is a very nice boy
much of luck in the future
Love always
Linda Gibbs"*



CHARLES JARVIS
SANDRA JENNETTE
THOMAS JONES
DAVID MASON
MARIE MIDYETTE



J. P. O'NEAL
EDNA EARL PITTMAN
DORIS RABURN
LYNN ROBERTS
JIMMY RODEFER



CHRISTINE SADLER
SYBIL SADLER

*When on this page you chance to look
Remember the friend who wrote in your book.*

EIGHTH GRADE



WOODLEY SADLER
DEWEY SAWYER
SHELBY SAWYER
ROGER SAWYER

BETTY SEARS
BETTY SIMMONS
RENA SPARROW
PATRICIA SWINDELL

CAROLYN WATSON
EVELYN WHEELER
FRANCIS WILLIAMS
LEAH WILLIAMS

*I ain't been to college
and ain't been to school
but when it comes to
loving "man educated
"max"*

*Remember me
when this page*

*a friend always
Lena*

SEVENTH GRADE

MARVIN BROOKS
FRANCES CAHOON
JUNE CAHOON
BILLY GENE CARAWAN

ROSANNA CARAWAN
DOROTHY CUTHRELL
LAWRENCE JOHNSON
ELAINE RODEFER

REBECCA SMITH
NANCY STOTESBURY
GLORIA SWINDELL
JEAN WILLIAMS

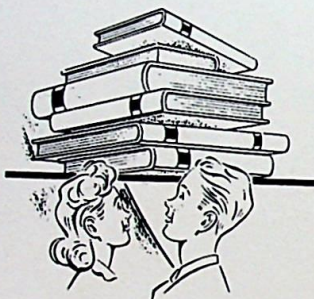


SIXTH GRADE

DELBERT ARMSTRONG
 WILLIAM ED BASNIGHT
 RAYMOND GIBBS
 ELIZABETH ANN HARRIS



JOHN JAY HARRIS
 REGINALD MASON
 GENE AUTRY MIDYETTE
 GLENN O'NEAL



JAMES ROBERTS
 ELLEN SADLER
 BETTY JEAN SMITH
 BOBBY SPENCER

SUE SWINDELL
 SANDRA SWINDELL
 DOUGLAS TUNNELL
 JOYCE WHEELER

AMELIA WORRELL
 FAYE SAWYER

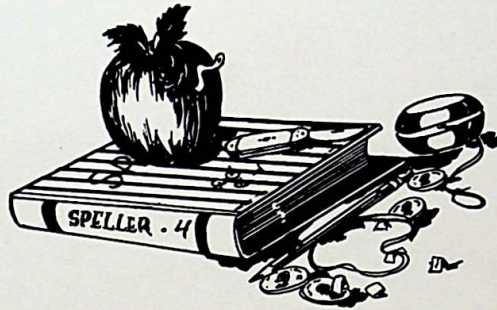
FIFTH GRADE



JOE HENRY BISHOP
DOROTHY BRICKHOUSE
EMILY LOU CAHOON
JOSEPH CAHOON



KAY CUTHRELL
GENE GIBBS
CHRISTINE HARRIS
LEONARD HARRIS



ROBERT EUGENE JARVIS
TOMMY MASON
BOBBY MAYO
JIMMY McKINNEY



MILDRED MIDYETTE
LARRY O'NEAL
BARBARA PEGRAM
JOE FRANK SADLER



LARRY SADLER
TOLAR SIMMONS
PHILIP WAYNE SHERMAN
GEORGIE B. WILLIAMS



NOT PICTURED
HAL McGEE

FOURTH GRADE

ROSE CAHOON
 JUDY CARAWAN
 DIANTHA GIBBS
 ROSALIND HARRIS



BOBBY ARMSTRONG
 LESLIE BROOKS
 GLENDA CAHOON
 LINDA CAHOON



HENRY JOHNSON
 JOSEPH ALLEN GIBBS
 RICHARD LUPTON
 JACK MASON
 WAYNE MASON

MARY ANN MCKINNEY
 DAVID O'NEAL
 RONAL PUGH
 JIMMY RABURN
 DELMER SADLER

DIANA SADLER
 MARY JANE SHELTON
 GLORIA JEAN SMITH
 JUDY SPENCER
 JOY SWINDELL

THIRD GRADE



CAROLYN ARMSTRONG
DONALD BRICKHOUSE
WILLIAM O. BRICKHOUSE
CONNIE BROWN



CHARLIE MAC CAHOON
ROY CARAWAN
BETTY JANE HARRIS
JACKIE JARVIS



CLARENCE JENNETTE
MELBA MIDYETTE
LOIS O'NEAL
ROY WAYNE O'NEAL



CHARLES D. REID
MAE SADLER
MARY-ANNE SWINDELL
CARLTON HARRIS



ALTHEA WILLIAMS
MARIAN ROSE WHEELER

NOT PICTURED
CHARLOTTE PARKER



SECOND GRADE

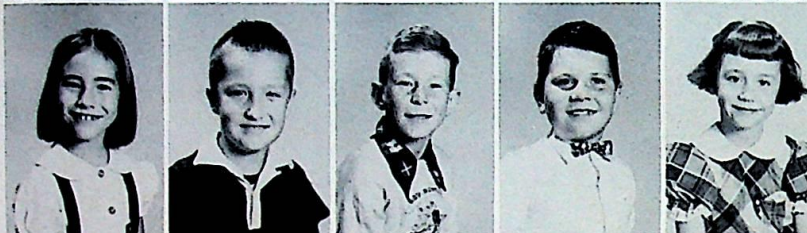
BETTY BONNER
BRADLEY GIBBS
MITCHELL JOHNSON
THOMAS JONES
LYNN MASON



TROY MAYO
KYLE MANN
GEORGIA CAROL MITCHELL
RICHARD O'NEAL
LYNETTE PUGH



RITA SIMMONS
SHERWOOD SMITHWICK
HYMAN SPENCER
A. B. SWINDELL
BETSY LEE WORRELL



NOT PICTURED
BOBBY JARVIS

FIRST GRADE

JAMES CAHOON, JR.
GEORGENE BOUCHARD
MARY JANE GIBBS
SANDRA GREENE



JAMES GURGANUS
RONNIE MCKINNEY
GARY SADLER
LINDA CAROL SADLER



JANE SADLER
LUCINDA SWINDELL
JIMMIE WHITAKER
MICHAEL WILLIAMS



NOT PICTURED
LARRY HUDSON
ROBERT CAHOON
SUSAN STONE

ADVERTISEMENTS



SCOTT TOPPING'S SAUSAGE PLANT

Country Sausage

Pantego

North Carolina

CAROLINA DAIRIES

Grade A

Dairy Products

Washington - Greenville - Kinston

Compliments to

The Graduating class of Swan Quarter School

A FRIEND

Washington

North Carolina



MACKENZIE EQUIPMENT COMPANY

Farmall Tractors, International Trucks

Phone 517

Phone 518

Washington

North Carolina

Drink

Coca-Cola

REG. U.S. PAT. OFF.

NEW BERN COCA-COLA BOTTLING COMPANY

SMALL'S BOOK STORE

Headquarters for
School and Office Supplies

Washington North Carolina

MAOLA ICE CREAM COMPANY



115-117 E. Water Street

Washington North Carolina

JEFFERSON GAS & APPLIANCE Co.

Buy from your local
merchant merchandise
supplied by

SUSKIN & BERRY, INC.

Phone 220

Washington North Carolina

Washington North Carolina



SWAIN BUICK COMPANY

212 North Market Street

Telephone 198 and 705

Washington North Carolina

Compliments of

BELK-TYLER'S

Washington Shopping Center

Washington North Carolina

LATHAM SEED & EQUIPMENT CO., INC.

Phone No. 235-1

Belhaven

North Carolina

Compliments of

L.H. JOHNSON

Everything in Meats

Pantego

North Carolina

PUNGO GRAIN ELEVATOR, INC.

Grains

Excellent Unloading and Drying Facilities

Belhaven

North Carolina

CALFEE AUTO SUPPLY

Accessories, Marine Hardware

Mechanic's Tools

Belhaven

North Carolina

Compliments of

CLARK'S BEAUTY SHOP

Belhaven

North Carolina

BEAUFORT-HYDE MOTOR CO.

Ford Sales and Service



Pamlico Street

Belhaven

North Carolina

RIDDICK & WINDLEY

Paints-Hardware-Electrical Supplies

Headquarters Whittlers' Club

Belhaven

North Carolina

J. D. DAWSON COMPANY, INC.

Wholesale Distributors of
Notions, Drugs, and Grocers

Gliddens Paints

Ruberoid Building Supplies

Belhaven

North Carolina

Compliments of

DR. W. T. RALPH

Belhaven

North Carolina

WOLFE'S BODY & RADIATOR SHOP

R. M. Wolfe, Proprietor

Washington North Carolina

GUARANTY BANK & TRUST CO.

Belhaven North Carolina

**McKEEL'S
Super Market**

209 Pamlico St.

Phone 234-1

Belhaven North Carolina

IKE'S ESSO SERVICE STATION

I. M. Bateman

Belhaven North Carolina

RAD JONES CHEVROLET CO.

Sales - Service



Parts and Accessories

Belhaven North Carolina



T. A. JORDAN

Texaco Distributor

Waterfront Service Station

Belhaven North Carolina

<p style="text-align: center;">BULLUCK'S TOTS N' TEENS</p> <p>Belhaven North Carolina</p>	<p style="text-align: center;">SWINDELL'S DRESS SHOP</p> <p style="text-align: center;">Styles Are Newer Prices Are Lower</p> <p>Belhaven North Carolina</p>
<p style="text-align: center;"><i>Compliments of</i> BELHAVEN CANDY CO.</p> <p>Belhaven North Carolina</p>	<p style="text-align: center;">VOLIVA FURNITURE STORE</p> <p style="text-align: center;">Quality Furniture Reasonably Priced</p> <p>Belhaven North Carolina</p>
<p style="text-align: center;">FARMERS EXCHANGE</p> <p style="text-align: center;">Friendly F. C. X. Dealer</p> <p>Belhaven North Carolina</p>	<p style="text-align: center;"><i>Compliments of</i> CAMEO THEATRE</p> <p>Belhaven North Carolina</p>
<p style="text-align: center;"><i>Compliments of</i> BURGESS</p> <p style="text-align: center;">Department Store</p> <p>Belhaven North Carolina</p>	<p style="text-align: center;">PAUL'S SINCLAIR SERVICE STATION</p> <p style="text-align: center;">West Main Street</p> <p>Belhaven North Carolina</p>
<p style="text-align: center;"><i>Compliments of</i> LUPTON TOBACCO CO.</p> <p>Belhaven North Carolina</p>	<p style="text-align: center;">RUSS TEXACO SERVICE</p> <p>Pantego North Carolina</p>
<p style="text-align: center;">VOLIVA LUMBER COMPANY</p> <p style="text-align: center;">Kiln Dried Rough and Dressed Lumber Concrete and Cinder Blocks</p> <p>Belhaven North Carolina</p>	<p style="text-align: center;"><i>Compliments of</i> GRIFFIN'S JEWELRY STORE</p> <p>Belhaven North Carolina</p>

<p>THE ANNIE "B" SHOPPE</p> <p>Tots and Teens</p> <p>127 E. Main St.</p> <p>Washington North Carolina</p>	<p>STOWE'S CLEANERS</p> <p>N. Market Street</p> <p>Washington North Carolina</p>
<p>TETTERTON PRINTING CO.</p> <p>South Market St.</p> <p>Route 3</p> <p>Washington North Carolina</p>	<p>LITTLE FURNITURE CO.</p> <p>New and used Furniture Pianos A Specialty</p> <p>Cor. 5th & Hackney St.</p> <p>Washington North Carolina</p>
<p>S. B. ETHERIDGE DRUG STORE</p> <p>"The Home of Pink-A-Dine"</p> <p>The Rexall Store</p> <p>Washington North Carolina</p>	 <p>SMITH</p>  <p>MOTOR COMPANY</p> <p>220 N. Market Street</p> <p>Washington North Carolina</p>
<p>MATTHEWS-WHITFORD CO.</p> <p>Commercial Printers Office Supplies</p> <p>Phone 1113</p> <p>Washington North Carolina</p>	<p>KUGLER-NICHOLSON, INC.</p> <p>Sporting Goods</p> <p>Outboard Motors</p> <p>Washington North Carolina</p>
<p>LEGGETT</p> <p>"Merchant of Cleanliness"</p> <p>Cleaner - Launderer</p> <p>Phone 22</p> <p>Washington North Carolina</p>	<p>For the Best in</p> <p>Jewelry and Watches</p> <p>STEWART'S JEWELRY STORE</p> <p>N. Market Street</p> <p>Washington North Carolina</p>
<p>W. C. BROWNING</p> <p>The Jeweler</p> <p>Washington North Carolina</p>	<p>WELCH'S DRUG STORE</p> <p>Prescription Druggists</p> <p>"Where Everybody Meets"</p> <p>Phones 100 - 31</p> <p>Washington North Carolina</p>

CARGILL, INC.

We buy and sell all types grain.
Fast and Efficient Handling

Call 1580-1681

Washington

North Carolina

GO-MORE CHEVROLET CO.

You Go More for Less
The Chevrolet Way
Bridge & Third Streets

Washington

North Carolina

SMITH-MILLS PONTIAC

Sales - Service
"Dollar for Dollar
You Can't Beat a Pontiac"
Used Car Lot: W. 5th Street

Washington

North Carolina

MOSS PLANING MILL CO.

Building Materials

Washington

North Carolina

Visit

WHICHARD'S BEACH

Open Year Round
Round and Square Dances
Wednesday and Saturday Nights

Washington

North Carolina

O'NEIL ELECTRIC CO., INC.

Electric and Refrigeration Service

B. S. O'Neil, Manager

Washington

North Carolina

Our Congratulations to the Members of
the Graduating Class of 1954

We wish for a Long and
Happy Life of Usefulness.

PAMLICO POWER & LIGHT CO.

Engelhard

North Carolina

THE EAST CAROLINA BANK

Member Federal Deposit Insurance Corporation

Engelhard -- Swan Quarter -- Columbia

Engelhard

North Carolina

Meeting Place



**FRIENDLY
SODA SHOP**

Engelhard

North Carolina

See Top - Run Pictures

SKEET THEATRE

Engelhard

North Carolina

MOONEY'S THEATRE

Fairfield

North Carolina

Warren Harris, Manager

Congratulations!

---Seniors---

JOLLY RADIO SERVICE

Philco-Radio-Television
Appliances

Sales - Service

Phone 521

Engelhard North Carolina

Evelyn Cahoon

TYRELL DRUG CO.

Columbia North Carolina

TYRRELL HARDWARE CO.

Westinghouse Electrical
Appliances

Hardware, Paints, Seeds

. C. A. Radios-Sporting Goods

Columbia North Carolina

F. L. VOLIVA HARDWARE CO.

We Have a Warehouse
Well Stocked with
High Grade Building Materials
Dutch Boy Paints
Prices Reasonable
Rough & Dressed Lumber
Kiln Dried
G. E. Appliances

Belhaven North Carolina

GOODSON ROOFING SERVICE

Roofing and Siding Contractors

Everlox Shingles - Asbestos and Insulated Siding

Built - Up Roofing

Estimates No Obligation

Phone 4322
Greenville, N. C.

Branch Spencer
Swan Quarter, N. C.
Phone 32-7

<p>CAHOON AND WAHAB General Merchandise Meats - Vegetables G. E. Televisions Hot Point Elc. Appliances</p> <p>Swan Quarter North Carolina</p>	<p>VIRGINIA'S CAFE</p> <p>We Specialize in Sea Food</p> <p>Swan Quarter North Carolina</p>
<p>A. CAHOON</p> <p>General Merchandise Meats-Fancy Groceries F. C. X. Feed Supplies Farm Machinery</p> <p>Swan Quarter North Carolina</p>	<p>G. L. CAHOON, AGENT</p> <p>Home Security Life Insurance Company</p> <p>Box 494</p> <p>Swan Quarter North Carolina</p>
<p><i>Compliments of</i> JOHN S. JARVIS</p> <p>Service Station</p> <p>Swan Quarter North Carolina</p>	<p>MILTON'S</p> <p>Pool Room</p> <p>Swan Quarter North Carolina</p>
<p><i>Compliments of</i> GILBERT RICHARDS</p> <p>Scranton North Carolina</p>	<p><i>Compliments of</i> W. E. BISHOP</p> <p>Scranton North Carolina</p>
<p>THE BERRY COMPANY</p> <p>Hardware-Paints-Oil-Glass Hyde County Funeral Directors For G. E. Products See our Show Room at Once</p> <p>Swan Quarter North Carolina</p>	<p><i>Compliments of</i> W. H. SPENCER</p> <p>Service Station</p> <p>Highway 264</p> <p>Scranton North Carolina</p>
<p>JACK'S SINCLAIR STATION</p> <p>Dealer in</p> <p>Fishing Equipment and Bait</p> <p>Swan Quarter North Carolina</p>	<p>O'NEAL'S TEXACO STATION</p> <p>Quick and Courteous Service at the Texaco Sign</p> <p>C. B. O'Neal, Manager</p> <p>Swan Quarter North Carolina</p>

Radios - House Furnishings

QUINN MILLER & COMPANY

Furniture - Stoves - Ranges

T. C. Tunnell, Manager

Swan Quarter

North Carolina

WILLIAMS & WILLIAMS

Dealers in

Feeds, Paints, Shoes

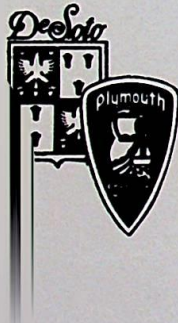
Easy Washing Machines

General Merchandise

Swan Quarter

North Carolina

TRI-COUNTY MOTORS



DeSoto - Plymouth



Main Street

Telephone 56-1

Swan Quarter

North Carolina

D. E. TUNNELL

Dealer in

Livestock and Produce

Phone 242

Swan Quarter

North Carolina

BALLANCE SERVICE STATION

Esso

Oyster Bar

Dancing the Year Round

with Roof Garden

During the Summer Months

Dial 11-3

Fairfield

North Carolina

SNAPSHOTS



way back here out of sight
I write this last bit. W

Never forget
the friends you've made
& especially, in the old Eighth Grade.
always,
Emily

Way back here out of
sight.

I will write my name
just for spite. Always,
Rebecca Smith

