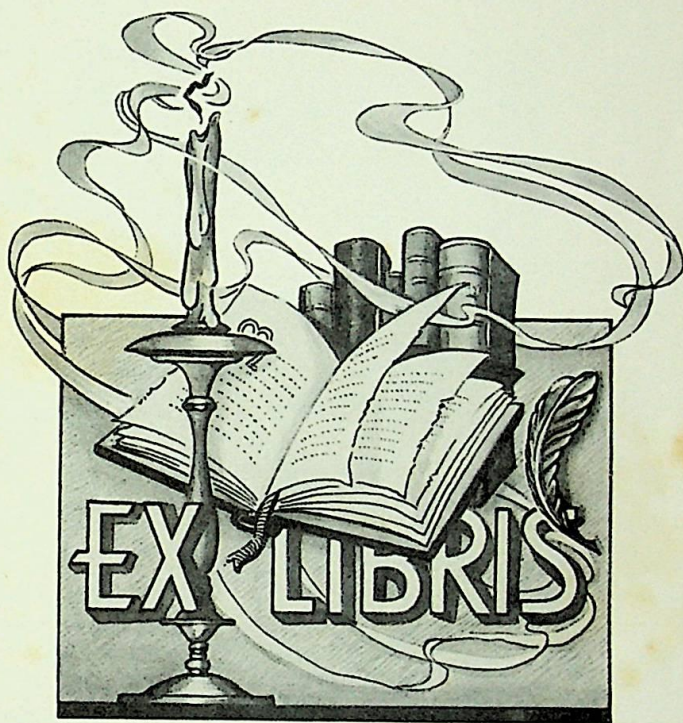


The Quarterian

1949





# *Dedication*



As an expression of gratitude for advice, cooperation, and inspiration, we, the Seniors, think it fitting that this the second yearbook of Swan Quarter High School be dedicated to Mrs. Carolyn Harris, our typing teacher and class sponsor.



# ADMINISTRATION

# ***THE FACULTY***



Thomas A. Hood, Carolyn Harris, J. M. Worrell,  
Marina J. Baum, Priscilla Cochran, Marietta  
McKinney, Lona Bonner, Mrs. Claude Sawyer,  
Lola Watson, Alice Williamson

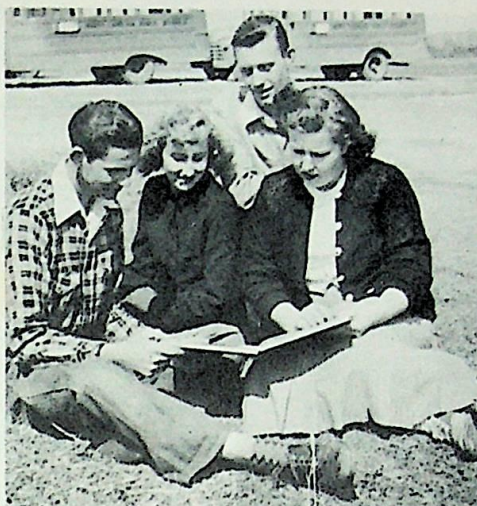


# SENIORS

# SENIOR CLASS OFFICERS

Leo Bishop  
President

Eloise Smithwick  
Vice-president



Leona B. Harris  
Secretary-treasurer

Robert Lee Hill  
Reporter

## MASCOTS

Connie Brown, A. B. Swindell

## COLORS

Blue and White

## FLOWER

Dogwood

## MOTTO

"Tonight we launch; where shall we anchor?"



## CLASS POEM

By Margaret Brinn

The time is almost here to go on our way  
Further into life, and we must not delay.

Delay will bring hardships and burdens to bear;  
Let's up and about and we'll not be laden with care.

Our footsteps we'll guide to a higher plane.  
And someday perhaps o'er a throne we'll reign.

Now teachers and friends of the class of '49,  
Your help will be appreciated for a very long time.



ROBERT LEE HILL  
FFA 1234, Officer 4  
Basketball 1234  
Senior Play 4



LEONA B. HARRIS  
Beta Club 234, FFA 1234,  
Officer 123, Class  
Officer 34, Paper Staff  
34, Marshall 3



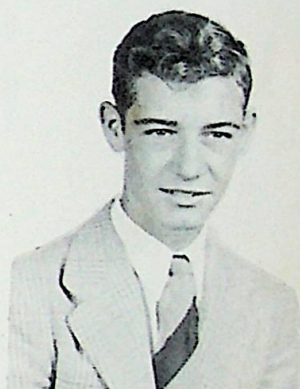
LIONEL L. BISHOP, JR.  
FFA 234, Officer 34,  
Basketball Team 234,  
Class Officer 34,  
Softball Team 34,  
Senior Play 4,  
Carnival King 4



CURTIS THOMPSON  
Senior Play 4



MARGARET BRINN  
Softball 14, Paper  
Staff 4, FFA 1234



AUGUSTUS T. BLAKE  
FFA Officer 1,  
Basketball 1234,  
Softball 1234



ELOISE SMITHWICK  
FFA 1234, Officer 4,  
Senior Play 4, Class  
Officer 34, Paper  
Staff 4



PERCY HARRIS  
Basketball 234  
Softball 234



JANE C. SIMMONS  
FFA 1234, Officer 123,  
Senior Play 4, Class  
Officer-3, Paper Staff 4,  
Carnival Queen 34





# JUNIORS

JUNIOR CLASS OFFICERS

LaRue McKinney, President  
Arlene Cahoon, Vice-president  
Clara Mason, Secretary  
Ruby Hodges, Treasurer  
Marlene Jennette, Reporter



SOPHOMORE CLASS OFFICERS

Eleanor Wheeler, President  
Janice Gibbs, Vice-president  
Ann Carawan, Secretary-treasurer  
Jean Spencer, Reporter

FRESHMAN CLASS OFFICERS

Bobby Jean Credle, President  
Joan Emory, Vice-president  
Norma Earle Swindell, Sec'y.-Treas.  
Hilda Smithwick, Reporter





Robert G. Berry



Marlene Jennette



Carroll D. Gibbs



Garth Jarvis



Arlene Cahoon



Hunter Mason



Hiatt Cahoon



LaRue McKinney



William Cochran, Jr.



John Shelton



Ruby Hodges



Wade Swindell



Wahab Cahoon



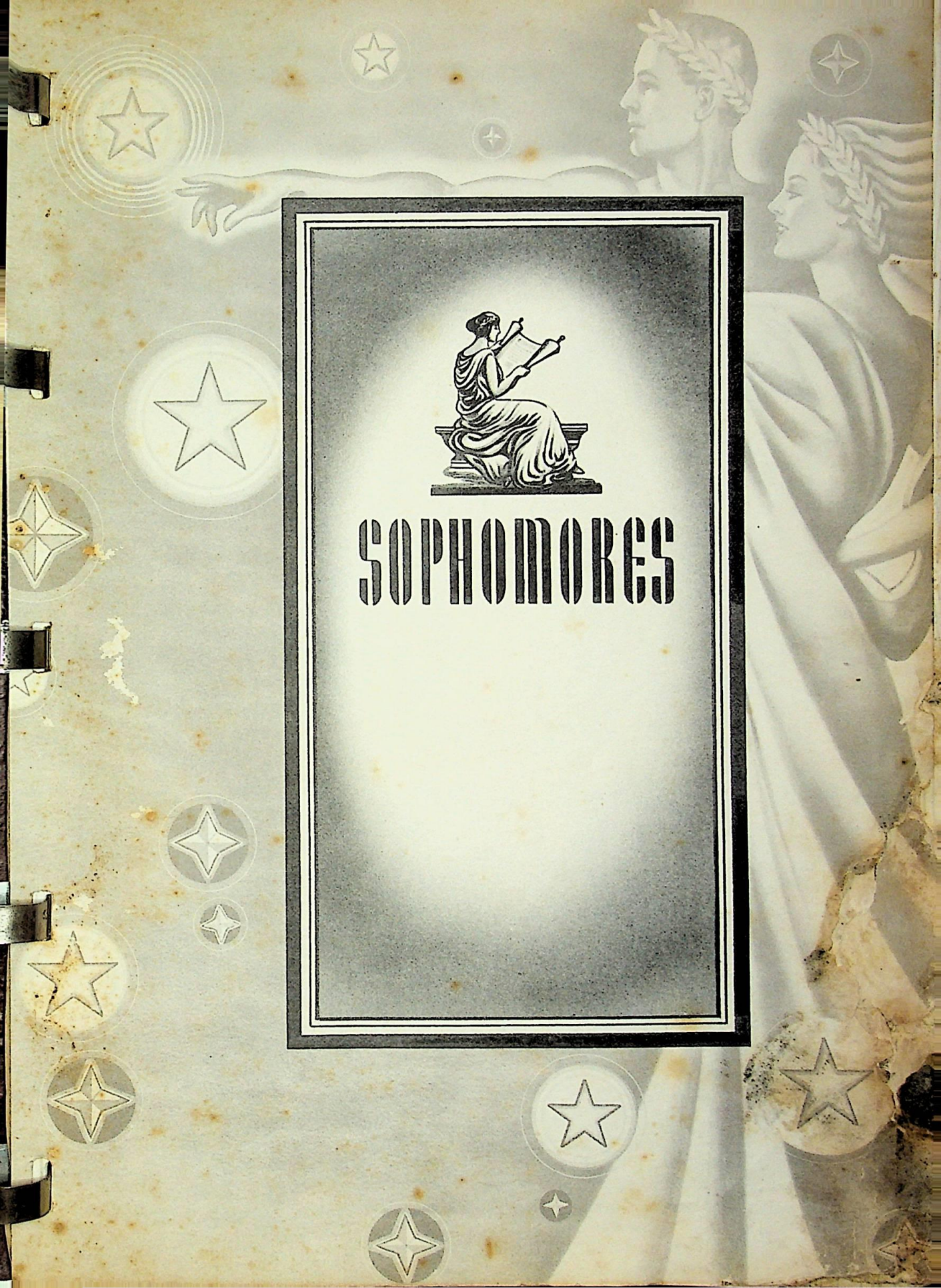
Clara Mason



W. J. Swindell



# SOPHOMORES





Harriet Raburn



Allen Credle



Ann Carawan



Tooley Credle



William Harris



Sam Sewell



Thomas Sanderson



Arlen Swindell



Janice Gibbs



Glenn Carawan



Metta Armstrong



Tommy Bishop



Ruby Brinn



Elbert Gibbs



Balford Gibbs



Jean Spencer



Max O'Neal



Eleanor Wheeler



# FRESHMEN



# FRESHMEN



Dallas Berry



Alethia Blake



Edward Cahoon



Bobbie Jean Credle



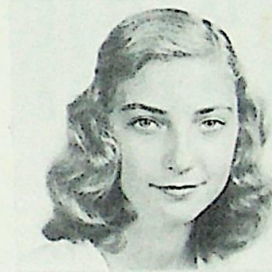
Cleron Carawan



Georgia Ann Credle



Eugene Equils



Joan Emory



Norwood Harris



Sudie Nell Midyette



Mary Lou Raburn



Sherma Lee Smith



Hilda Smithwick



Norma Earle Swindell



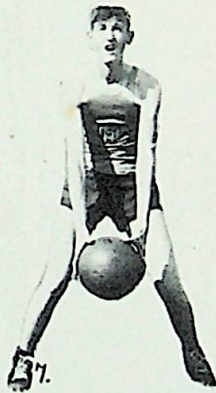
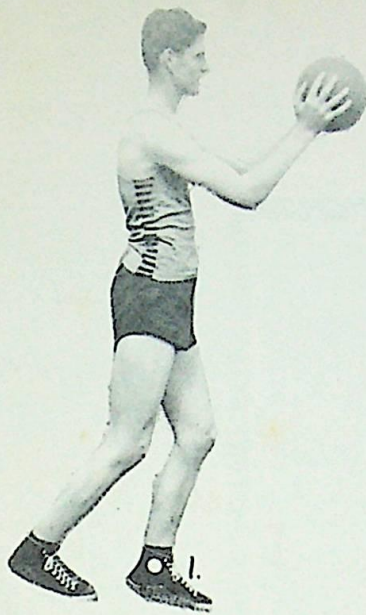




# ATHLETICS



# ATHLETICS



- |    |                           |         |
|----|---------------------------|---------|
| 1  | Jay Swindell . . . . .    | Center  |
| 2  | Wahab Cahoon . . . . .    | Center  |
| 3  | Leo Bishop . . . . .      | Forward |
| 4  | Gus Blake . . . . .       | Guard   |
| 5  | Bill Cochran . . . . .    | Forward |
| 6  | Robert Lee Hill . . . . . | Guard   |
| 7  | Bobby Berry . . . . .     | Forward |
| 8  | John Shelton . . . . .    | Guard   |
| 9  | Wade Swindell . . . . .   | Forward |
| 10 | Garth Jarvis . . . . .    | Forward |

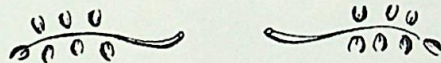


# ACTIVITIES

# ANNUAL STAFF



Editor . . . . . Leona Brown Harris  
 Assistant Editor . . . . . Clara Mason  
 Art Editor . . . . . Jane Carawai Simmons  
 Business Manager . . . . . Eloise Smithwick



# THE REFLECTOR



Editor . . . . . William I. Cochran, Jr.  
 Assistant Editor . . . . . Leona B. Harris  
 Art Editor . . . . . Sudie Nell Midyette

# F.H.A. CLUB



## FHA OFFICERS

Clara Mason . . . . .	President
Ann Carawan . . . . .	Vice-president
Jean Spencer . . . . .	Secretary
Alethia Blake . . . . .	Treasurer
Eloise Smithwick . . . . .	Historian
Georgia Ann Credle . . . . .	Song Leader
Bobbie Jean Credle . . . . .	Pianist
Ruby Hodges . . . . .	Parliamentarian

Alice R. Williamson. . . . . Adviser

# F.F.A. CLUB



## FFA OFFICERS

### Eleventh and Twelfth Grades

William I. Cochran, Jr. . . . .	President
Robert G. Berry. . . . .	Vice-president
Leo Bishop. . . . .	Secretary
Wahab Cahoon. . . . .	Treasurer
Robert Lee Hill. . . . .	Reporter
Jay Swindell. . . . .	Sentinel

### Ninth and Tenth Grades

Arlen Swindell. . . . .	President
Garland Credle. . . . .	Vice-president
Edward Cahoon. . . . .	Secretary
Glenn Carawan. . . . .	Treasurer
Sam Sewell. . . . .	Reporter
Norward Harris. . . . .	Sentinel

J. M. Worrell. . . . . Adviser

# BETA CLUB



## MEMBERS

Ann Carawan, Sherma Lee Smith, Leona Harris, Katherine Credle, Bill Cochran, Sudie Nell Midyette, Sally Blane Credle, Louise Credle, Bobbie Jean Credle, Wahab Cahoon, Clara Mason, Eloise Smithwick, Mrs. Carolyn Harris, Jean Spencer, Arlene Cahoon, John Shelton, Eleanor Wheeler, Mrs. Hunnings. Not photographed: LaRue McKinney, Joan Emory, Cova Smith, Bobby Berry, Ruby Hodges

## OFFICERS

President . . . . .	Bill Cochran
Vice-president . . . . .	Sally Blane Credle
Secretary . . . . .	Clara Mason
Treasurer . . . . .	Wahab Cahoon
Reporter . . . . .	LaRue McKinney
Beta Biter . . . . .	Bobby Berry

Colors: Gold and Black

Motto: "Let us lead by serving others"

The purpose of this organization is to promote the ideals of honesty, service, and leadership among the high school students of America, to reward meritorious achievement, and to encourage and assist students to continue their education after high school graduation.



# 4-H CLUB



W. H. Pruden . . . . . Farm Agent  
Gene Austin Swindell . . . . . President  
Ella Lou Cahoon . . . . . Vice-president  
Odessa Williams . . . . . Secretary  
Jane Harris . . . . . Reporter  
Mrs. Iberia R. Tunnell . . . . . Home Agent

#### 4-H Club Fledge:

I Pledge:

My Head to cleaner thinking;  
My Heart to greater loyalty;  
My Hands to larger service; and  
My Health to better living for  
My Club, My Community and My Country.

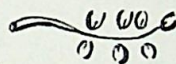
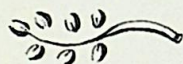
#### 4-H Motto:

"To Make the Best Better."





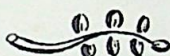
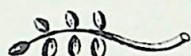
# SEVENTH GRADE



# EIGHTH GRADE



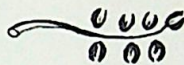
# FIFTH GRADE



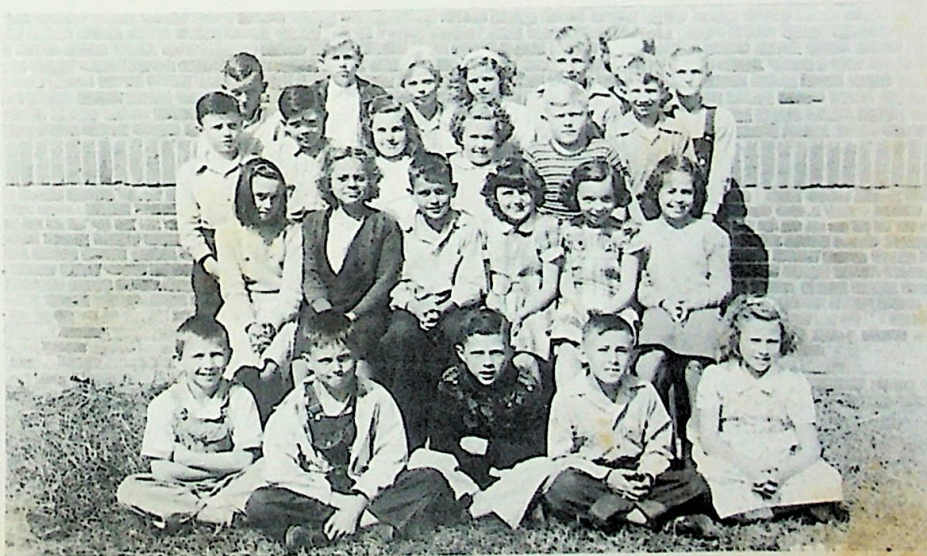
# SIXTH GRADE



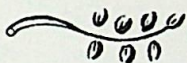
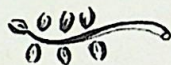
# THIRD GRADE



# FOURTH GRADE



# FIRST GRADE



# SECOND GRADE



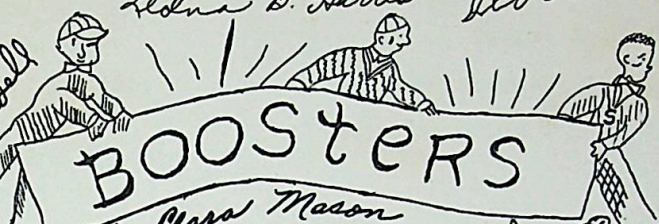


# ADVERTISING



Jane C. Simmons  
Barbara Dugh  
Patricia Swindell

Margaret Brunn  
Lena B. Harris  
Gloria Swindell



Leo Bishop  
M. H. Armstrong

Blaise Smithwick  
Louella Swindell  
J. E. Spencer  
Lona Bonner  
Daryl Smithwick  
Mildred Dale Sadler  
Evelyn Swindell  
Bill Cochran

Cara Mason  
Robby Berry  
Carawan  
J. Cochran

Edward Cahoon  
Cecilia Blake  
Bruce Berry  
Polly Ann Berry  
Ella Lou Cahoon  
Pratt Williamson  
Gene Austin Swindell  
Elizabeth P. Blake  
Joan Emory

Audrey Smithwick  
Metta Carawan  
Wayne Bishop  
Monna Lou Carawan  
Edward O'Neal  
Billy Griffing  
R. Arnold Libers

Sus Blake  
William Harris  
Arlen Swindell  
Loolie Credle  
Max O'Neal  
Jean Spencer  
Ann Carawan  
Arlene Carawan  
Lelia Bishop  
N.W. Spruill  
Arthur G. Watson

Adlene Cahoon  
42 Rue McKinney  
Marlene Jenrette  
Ruby Hodges  
Marina Baum  
Lois Ann Sanderson  
Gertie Jarvis

Doris Tunnell  
Jane Harris  
Lila Lee  
Rouita Spencer  
Betty Jean Sadler  
Kay O'Neal  
Barbara Steele  
Margaret Armstrong  
Edith J. Carawan  
E. A. Williams  
R. A. Swindell  
Carolyn Davis  
Arcy Harris

Harry E. Harris  
William S. Cann, M. A.  
Thomas A. Hood  
Cecilia W. Jennette  
Carol Williams  
T. C. Tunnell  
William Cliff Cahoon  
Edward Carawan  
Sudie Nell Michette  
Wahab Cahoon

W. J. Carrol  
Lucy Swindell  
Obera Cahoon  
Anne Williams  
Alma Rose  
Bessie  
Shelton

WELCH'S DRUG STORE  
Washington, N. C.  
Prescription Druggists  
"Where Everybody Meets"  
Phones 100 & 31

VOLIVA HARDWARE CO.  
Furniture-Electrical Appliances  
Belhaven, N. C. Phone 246-1

HOELL MOTOR COMPANY  
Washington, N. C.  
Phone 800

MATHIAS & CO. INC.  
Wholesale Groceries  
&  
Feeds  
Distributors of  
Snowdrop Flour & B/4 Feeds  
Washington, N. C. Phone 245

JACK'S FURNITURE STORE  
105 Water Street  
Washington, N. C.  
Phone 937

MAOLA ICE CREAM COMPANY



Washington, N. C.

BENNETT WHOLESALE CO.  
Washington, N. C.  
Wholesale Only  
Cigars-Cigarettes-Pipes-Candies  
Everything for the Soda Fountain  
Phone 427

Compliments  
of  
William S. Cann

FOR RECREATION  
Pool at  
THE HOLE IN THE WALL  
Swan Quarter, N. C.

MYERS FLORIST  
"Everything In Flowers"  
Washington, N. C.

FRIENDLY SODA SHOP  
Drugs-Sundries  
Fountain Service  
Engelhard North Carolina

For Myers' Flowers  
Call  
Bill Cochran, Jr., Agent  
Swan Quarter, N. C.  
Telephone 23-7

J. H. PATRICK

Fresh Fruits, Vegetables, Meats

Engelhard

Dial 311

JOHNSTON & McKEEL

Grocery and Meat Market  
Fruits A Specialty

Belhaven, N. C.

Phone 261-1

Hot Point Appliances  
General Electric Radios

A. J. SCHMITT

Electrical Contractor  
Engelhard, N. C.

Day Phone 491

Night Phone 296

Enjoy Lovelier Clothes  
From

TOTS N' TEENS

Belhaven, N. C.

GUY T. SWINDELL, Your Jeweler

Certified Watchmaker

Phone 138

Washington, N. C.

RIDDICK & WINDLEY  
Belhaven, N. C.

Paints-Hardware  
Electrical Supplies

Phone 205-1

Compliments of  
BELL JEWELRY COMPANY  
Oldest, Busiest, Best  
Washington, N. C.

Compliments  
of  
M. SYSTEM STORE  
Belhaven, N. C.

Gifts For All Occasions

Best Repairing

STEWART'S JEWELRY STORE

Market St.

Washington, N. C.

GRIFFIN JEWELRY CO.  
Belhaven, N. C.

Watches-Diamonds-Bracelets  
General Watch Repair

WASHINGTON SUPPLY COMPANY

FIRESTONE

Home and Auto Supplies  
Sherwin-Williams Paint  
General Electric Appliances

211 W. Main St.

Washington, N. C.

Phone 19

JORDAN HARDWARE CO. INC.

"Everything in Hardware"

C. O. Jordan, Manager  
Washington, North Carolina

CAHOON & WAHAB  
General Merchandise  
Meats  
Fancy Groceries

Swan Quarter

Dial 196

B & B MARKET

Fresh Meats

W. H. Boomer, Mgr.  
Swan Quarter

Phone 231

For Avon Products

See

Mrs. Elizabeth Blake  
Swan Quarter, N. C.

SKEET THEATER

Engelhard, N. C.

Congratulations & Best Wishes

to

The 1949 Graduates

R. L. GIBBS & COMPANY

Wholesale Produce-Seed-Feed  
Specialties-Corn-Cotton-Oats  
Potatoes-Soybeans

Engelhard, N. C.

Phone 25-6

PAMLICO ICE AND LIGHT CO.

Engelhard, N. C.

J. H. JARVIS  
Engelhard, N. C.

FRIGIDAIRE

Refrigerators, Ranges,  
Water Heaters

Stop at

NEAL'S ESSO STATION

Headquarters for ESSO Products  
Atlas Tires, Batteries, Accessories

Engelhard, North Carolina

GILBERT GIBBS

Engelhard, N. C.

Dry goods, Boots, Shoes

ENGELHARD CAFE

We specialize In Serving Steaks  
and  
Fresh Sea Foods Caught Daily

B. G. Midyette, Mgr.  
Engelhard, N. C.

Phone 416

Phone 371

STOWE & BAKER

Dry Cleaning  
Free Pick Up and Delivery Service

Engelhard, N. C.

WILLIAMS & WILLIAMS  
Shoes, Hats, Gas Ranges  
Heaters, Feeds  
General Merchandise

Swan Quarter

Dial 292

ALL KINDS FANCY FOODS--QUALITY MEAT  
FRESH FRUITS and VEGETABLES

A. CAHOON  
Swan Quarter

LUPTON'S OYSTER HOUSE

Swan Quarter

Phone 261

QUINN MILLER & CO.

Furniture, Refrigerators  
Radios

Dial 261

Swan Quarter

Something for Everybody

LOCKHART'S IDEAL

5¢ to \$5 Store

Swan Quarter

TEXACO SERVICE STATION

Quick and Dependable Service

Carlos Berry, Owner  
Swan Quarter, N. C.

THE BERRY CO.

Swan Quarter

Hardware, Glass, Paint, & Oil

Dial 381

Dial 431

SPRUILL'S

Dry Cleaning

Swan Quarter, N. C.

Phone 296

The Party is over.  
Now we are back to reality.

See J. L. TUNNELL for bargains

Especially Sun Dial Shoes

Swan Quarter

M. O. CARAWAN

dealer in

Lumber, Livestock, Grain  
Fertilizer

Swan Quarter, N. C.

Compliments

of

THE EAST CAROLINA BANK

STOP

MACK'S ESSO STATION

Quick and Courteous Service

M. L. Carawan, Mgr.

Swan Quarter

Dial 421

# DAV-SON CORK BACK BULLETIN BOARDS



DAV-SON cork back and changeable letter bulletin boards are constructed with light walnut finish frames. The cork posting surface consists of 1/4 inch cork mounted on 1/4 inch 3-ply veneer. The changeable letter insert is of grooved wood felt covered. These bulletins are made to endure as only the finest of materials are used in their construction.

Bulletin board with two set in glass doors. Both sides cork.

STYLE: TWO SET IN GLASS

30" x 48" .....	\$30.00
30" x 60" .....	32.50
36" x 48" .....	31.25
36" x 60" .....	36.25

ALL PRICES F. O. B. CHICAGO

**FOR USE IN**  
**SCHOOLS**  
**CHURCHES**  
**FACTORIES**  
**OFFICES**  
**STORES**  
**CLUBS**  
**PUBLIC BUILDINGS**

Bulletin board with two set in glass doors. One side cork the other changeable letter insert.

(Letters are not included)

30" x 48" .....	\$44.85
30" x 60" .....	51.40
36" x 48" .....	49.40
36" x 60" .....	59.35

SPECIAL ASSORTMENT OF 600 1/4 AND 1 INCH LETTERS \$12.00

THESE BULLETIN BOARDS ARE FITTED WITH A LOCK AND KEY TO INSURE NO UNAUTHORIZED CHANGE OR ANNOUNCEMENTS.



DISTRIBUTORS:

**SCHOOL GIFT SERVICE**  
 4925 GLENDALE  
 KANSAS CITY 4, MISSOURI

WE HAVE A CHANGEABLE LETTER OR CORK BULLETIN FOR EVERY NEED—CONSULT US



Compliment Your Letter  
WITH

*Johnhan Stationery*

Your Dealer Has It!